



GOVERNMENT OF PUERTO RICO

Department of Health  
Medicaid Program

# Interface Management Standard Operating Procedure

Responsible Party: ASES

**Version 1.5**  
**January 23, 2019**



## Document Information

Required Information	Description
<b>Document SharePoint Location:</b>	PRMMIS Operations/Operations/SOPs/Final SOPs
<b>Owner:</b>	Puerto Rico Dept. of Health; ASES
<b>PRMP Approved By/Date:</b>	
<b>ASES Approved By/Date:</b>	

## Document Revision History

Version Number	Date	Description
<b>1.0</b>	05/14/18	Initial version
<b>1.1</b>	05/24/18	Ramiro Rodríguez changes
<b>1.2</b>	09/17/18	Final draft
<b>1.3</b>	11/16/18	Final QC review
<b>1.4</b>	12/5/18	Updated as of November 30, 2018 (R.F. at ASES)
<b>1.5</b>	01/23/19	Add Data Models (M. Sánchez at ASES)



## Table of Contents

<b>DOCUMENT INFORMATION</b>	<b>II</b>
<b>DOCUMENT REVISION HISTORY</b>	<b>II</b>
<b>TABLE OF CONTENTS</b>	<b>III</b>
<b>1 ACRONYMS AND TERMS</b>	<b>1</b>
<b>2 PURPOSE</b>	<b>1</b>
<b>3 PROCESS TRIGGERS</b>	<b>4</b>
<b>4 SCOPE</b>	<b>6</b>
<b>5 RESPONSIBLE PARTY</b>	<b>7</b>
<b>6 INTERFACE MANAGEMENT PROCEDURES</b>	<b>7</b>
6.1 Daily, Weekly, and Monthly Interfaces Procedure	8
6.1.1 Process Flow for Daily, Weekly, and Monthly Interfaces	10
6.1.2 Step-by-Step Procedure for Daily, Weekly, and Monthly Interfaces	13
6.2 Interface Communication Procedure	16
6.2.1 Notification: Interface File Delivery to SFTP	17
6.2.2 Alert: Missed Execution	18
6.2.3 Alert: Interface Execution Failure (Detailed)	18
6.2.4 Alert: Interface Execution Failure (Non-Detailed)	19
6.3 Interface Error Reports Procedures	19
6.3.1 Integrator's Error Files	19
6.3.1.1 Process Flow for Generate Integrator's Error Reports	20
6.3.1.2 Step-by-Step Procedure for Generate Integrator's Error Reports	20
6.3.2 Generate OnBase Error Reports Procedure	21
6.3.2.1 Process Flow for Generate OnBase Error Reports	21
6.3.2.2 Step-by-Step Procedure for Generate OnBase Error Reports	21
6.4 Schedule Monthly Interface Execution Meeting Procedure	21
<b>7 REFERENCES</b>	<b>22</b>
7.1 Interface Description	22
7.2 Interface Schedule	25
7.3 Interface Diagrams	29
7.3.1 Interface Summary	29
7.3.2 Databases Overview	31
7.3.3 Member Eligibility Interfaces	32
7.3.4 Encounter/Claim Interfaces	33
7.3.5 Payment Register Interface	34
7.3.6 Assignments & Capitation Interfaces Summary	35



7.3.7	Provider Enrollments and Group Interfaces	36
7.3.8	Call Center Statistics Interface	37

**8 KEY PERFORMANCE INDICATORS 38**

**9 DATA MODELS 39**

9.1	Daily Member Assignments	39
9.2	Daily Member Eligibility	40
9.3	Daily Provider Enrollment	41
9.4	Daily Provider group linking	42
9.5	Monthly Capitation Payments	43
9.6	Monthly MCO Payments	44
9.7	Monthly Member Reconciliation	45
9.8	Weekly Payment Register	46

**LIST OF TABLES**

Table 1:	Acronyms and Terms	1
Table 2:	Daily Interface Runbook	4
Table 3:	Weekly Interface Runbook	5
Table 4:	Monthly Interface Runbook	5
Table 5:	Responsibility Matrix	7
Table 6:	Procedure for Daily, Weekly, and Monthly Interfaces	13
Table 7:	Interface File Delivery to SFTP Distribution List	18
Table 8:	Missed Execution Distribution List	18
Table 9:	Interface Execution Failure (Detailed) Distribution List	19
Table 10:	Interface Execution Failure (Non-detailed) Distribution List	19
Table 11:	Procedure for Generate Integrator's Error Reports	20
Table 12:	Procedure for Generate OnBase Error Reports	21
Table 13:	Interface Execution Schedule Responsibility Matrix	22
Table 15:	Interface Descriptions	23
Table 14:	Key Performance Indicators	38

**LIST OF FIGURES**

Figure 1:	PRMMIS Data Flow Diagram	3
Figure 2:	Interface Execution Processes	9
Figure 3:	Process Flow for Daily, Weekly, and Monthly Interfaces	10
Figure 4:	Process Flow for Generate Integrator's Error Reports	20
Figure 5:	Process Flow for Generate OnBase Error Reports	21
Figure 6:	Interface Schedule	27
Figure 7:	Interface Summary	30
Figure 8:	Databases Overview	31
Figure 9:	Member Eligibility Interfaces	32
Figure 10:	Encounter/Claim Interfaces	33
Figure 11:	Payment Register Interface	34



Figure 12: Assignments & Capitation Interfaces Summary	35
Figure 13: Provider Enrollments and Group Interfaces	36
Figure 14: Call Center Statistics Interface	37



# 1 Acronyms and Terms

The below table provides definitions of acronyms and terms used in this document.

**Table 1: Acronyms and Terms**

Acronym/Term	Definition
<b>API</b>	Application Program Interface
<b>ASES</b>	Administración de Seguros de Salud de Puerto Rico (in English: PRHIA – Puerto Rico Health Insurance Administration)
<b>ASSIST</b>	ASES Seamless and Integrated System Technology; this is ASES’s Core
<b>CMS</b>	Centers for Medicare & Medicaid Services
<b>EDw/HIA</b>	The Enterprise data warehouse developed by ASES financials and PRMMIS support
<b>Integrator</b>	Wovenware’s software solution to configure and control the interfaces
<b>Interface Stakeholders</b>	All partners of PRMMIS business process that produce, receive, or are affected by the interface processes
<b>MCO</b>	Managed Care Organization
<b>PCP</b>	Primary Care Provider
<b>PMP</b>	Primary Medical Provider
<b>PRDoH</b>	Puerto Rico Department of Health
<b>PRMMIS</b>	Puerto Rico Medicaid Management Information System
<b>PRMP</b>	Puerto Rico Medicaid Program
<b>SFTP</b>	Secure File Transfer Protocol
<b>SOP</b>	Standard Operating Procedure
<b>Wovenware</b>	Wovenware, developers of the interfaces and the Integrator software; Wovenware is a Puerto Rican development corporation

# 2 Purpose

The purpose of the Interface Management Standard Operational Procedure is to explain, in a detailed manner, the process of the interfaces from Administración de Seguros de Salud de Puerto Rico (ASES) to the Puerto Rico Medicaid Management Information System (PRMMIS). This document will detail which personnel are required for each task, and the timing in which tasks need to be completed.

The purpose of the interfaces is to update the PRMMIS data, which resides at DXC facilities in the United States. This process requires execution of the programs in a specific order and at a set time; accurate and timely communications are required in case of errors or exceptions when a situation arises.

Currently, the standardization of the interface process is still in development. This document provides the most complete information available at the time of this writing.



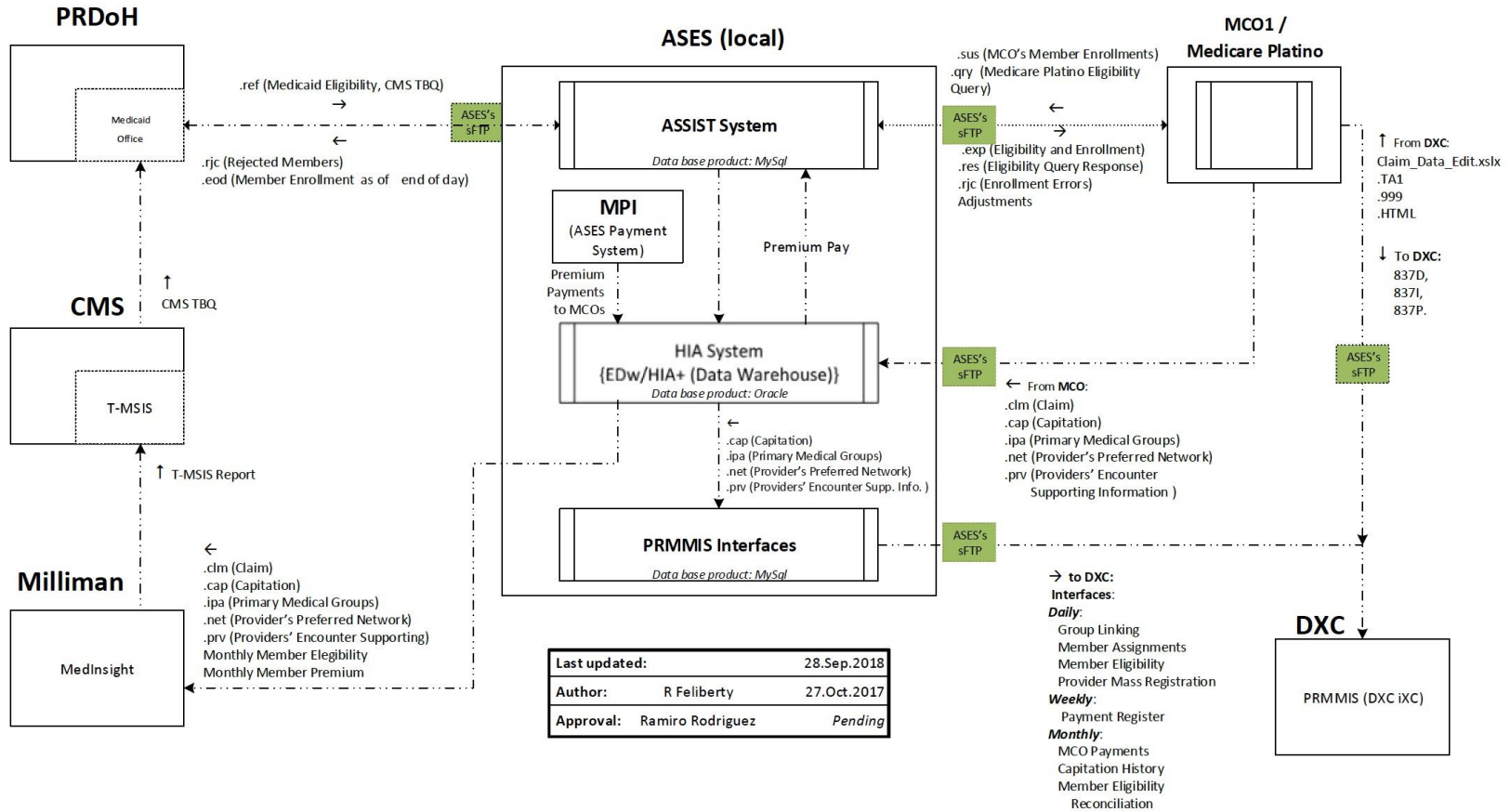
Interfaces are one of the processes of ASES; the data flow is shown in the following diagram (draft).



Figure 1: PRMMIS Data Flow Diagram



PRMMIS:  
Data Flow Diagram



Last updated:	28.Sep.2018
Author:	R Feliberty 27.Oct.2017
Approval:	Ramiro Rodriguez Pending





### 3 Process Triggers

This process is triggered when the ASES Seamless and Integrated System Technology (ASSIST, the ASES core application) daily update ends.

The following runbook tables describe steps, owners, and actions to be taken based on the delay or success of each step.

**Table 2: Daily Interface Runbook**

Step	Description	Expected Completion	Owner	Action on Delay	Action on Success
1	Send MEDITI2 data to ASES	9am (M-F)	PRMP/True North	Email PRMP MMIS by 9am	None
2	Update Core	12pm (M-F)	ASES	Email PRMP MMIS by 12pm	None
3	Update HIA	4pm (M-F)	ASES	Email PRMP MMIS by 4pm	Trigger Interfaces
4	Run daily Provider interface	5:30pm (M-F)	ASES	Email PRMP MMIS by 4:30pm	Email PRMP MMIS
5	Load daily provider data to MMIS		DXC		None
6	Run daily Member interface	6:30pm (M-F)	ASES	Email PRMP MMIS by 5:30pm	Email PRMP MMIS
7	Load daily member data to MMIS		DXC		None
8	Run daily Group Linking	7:30pm (M-F)	ASES	Email PRMP MMIS by 6:30pm	Email PRMP MMIS
9	Load daily group linking data to MMIS		DXC		None
10	Run daily Assignments	7:45pm (M-F)	ASES	Email PRMP MMIS by 6:45pm	None
11	Load daily assignments data to MMIS		DXC		None
12	Review daily Interface Error Log	10 am (M-F)	ASES	None	Notify managed care organization (MCO) with data request; notify PRMP MMIS



Step	Description	Expected Completion	Owner	Action on Delay	Action on Success
					with Filter Findings
<b>13</b>	Review MMIS Load Error Log	10 am (M-F)	DXC	None	Notify PRMP MMIS with findings

**Table 3: Weekly Interface Runbook**

Step	Description	Expected Completion	Owner	Action on Delay	Action on Success
<b>1</b>	Send MEDITI2 data to ASES	9am (Thursday)	Medicaid	Email PRMP MMIS by 9am	None
<b>2</b>	Update Core	12pm (Thursday)	ASES	Email PRMP MMIS by 12pm	None
<b>3</b>	Update HIA	4pm (Thursday)	ASES	Email PRMP MMIS by 4pm	Trigger Interfaces
<b>4</b>	Run weekly Payment Register interface		ASES	Email PRMP MMIS by 7:00 pm or next day.	Email PRMP MMIS
<b>5</b>	Load weekly Payment Register interface		DXC		None

**Table 4: Monthly Interface Runbook**

Step	Description	Expected Completion (See note 1)	Owner	Action on Delay	Action on Success
<b>1</b>	Send MEDITI2 data to ASES	9am (day of interface)	Medicaid	Email PRMP MMIS by 9am	None
<b>2</b>	Update Core	12pm (day of interface)	ASES	Email PRMP MMIS by 12pm	None
<b>3</b>	Update HIA	4pm (day of interface)	ASES	Email PRMP MMIS by 4pm	Trigger Interfaces
<b>4</b>	Run monthly Member Reconciliation interface	Run after daily Member (first business day of month)	ASES	Email PRMP MMIS by 7:00 pm or next day.	Email PRMP MMIS
<b>5</b>	Load monthly Member Reconciliation to MMIS		DXC		None
<b>6</b>	Run monthly Capitation	Run after daily interface	ASES	Email PRMP MMIS by 7:00	Email PRMP MMIS



Step	Description	Expected Completion (See note 1)	Owner	Action on Delay	Action on Success
		(5th business day of month)		pm or next day.	
<b>7</b>	Run monthly MCO Payment	Run after monthly Capitation (it can be the next day)	ASES	Email PRMP MMIS by 7:00 pm or next day.	Email PRMP MMIS
<b>8</b>	Load monthly capitation to MMIS		DXC		None
<b>9</b>	Load monthly MCO Payment		DXC		

**Notes:**

1. The interfaces have a dependency to the day in which Medicaid files is generated. Thus, “first business day of month” really means the first file for that month that Medicaid generated.

## 4 Scope

The procedures included in this SOP are:

- Daily, Weekly, and Monthly Interfaces Procedure
- Interface Communication Procedure
- Generate Interface Error Reports Procedures
- Schedule Monthly Interface Execution Meeting Procedure

The following procedures are excluded from this SOP and can be found as noted:

- Medicaid eligibility file transfer to ASES ASSIST
- MCOs file transfers to ASES ASSIST
- MCOs file transfers to DXC’s PRMMIS
- ASES ASSIST file transfers to Milliman, Inc.



## 5 Responsible Party

ASES is responsible for executing this SOP per the below table.

**Table 5: Responsibility Matrix**

Activity	ASES Operator*	ASES Manager	ASES Development	Woven ware	PRMMIS Manager
ASSIST Updates	R	A	S		I
EDw/HIA Updates	R	A	S		I
WW Integrator	R	A		S	I

\* These tasks can be carried out by other personnel, like a programmer or analyst.

Legend:

**Accountable:** The person who is ultimately accountable for the task being completed appropriately

**Consulted:** People who are not directly involved in carrying out the task but are consulted (Stakeholder or SME)

**Informed:** Those who receive output from the process or have a need to stay informed

**Responsible:** The person who actually carries out the task, responsible to get the job done

**Supportive:** The person who provides support during the task

## 6 Interface Management Procedures

The execution of the interface processes allows PRMMIS to receive the most recent data, thus the execution of timely and accurate interface processes is critical for the Medicaid business.

Currently there are eight different interfaces that execute at different frequencies, summarized in the Interface Execution Processes figure below. As shown in the figure, this document will discuss the procedures of each interface *by execution order, from daily to monthly* frequency. In other words, from the most frequent to the least frequent.

As with any other interface, the process of each one is:

- Extract data from source system(s)



- Transform the data in the needed format, context, and layout (in other words, the data needs to be modified somehow to make sense in the system it is going to be loaded to)
- Load the file to the secure file transfer protocol (SFTP) location
- Download the data from the SFTP location and load the data to PRMMIS (this step is carried out by DXC)

## **6.1 Daily, Weekly, and Monthly Interfaces Procedure**

All daily interfaces are executed as a group, once a day, in sequence each day, after the EDw/HIA update is carried out. Thus, for example, if there is a monthly interface to be executed today, then the daily interface execution is a sequential group of interfaces processed, one after the other, which will include that monthly interface. Note that if one interface is put on hold, the entire group is put on hold.

The following list comprises the Daily Interfaces:

- Member Eligibility – Daily updates
- Provider Enrollment – Run daily to pick up any MCO provider files submitted
- Member Assignments – MCO’s assignment of Primary Medical Group (PMG) and Primary Care Provider (PCP)
- Provider Group Linking – Affiliation of PCPs to PMGs

The following is the Weekly Interface:

- Payment Register - ASES payment to MCO

The following list comprises the Monthly Interfaces:

- Member Eligibility Reconciliation – Eligibility information for the month
- Capitation History - ASES to MCO payment
- MCO Payments – MCO payments to providers



Figure 2: Interface Execution Processes (see note 2)

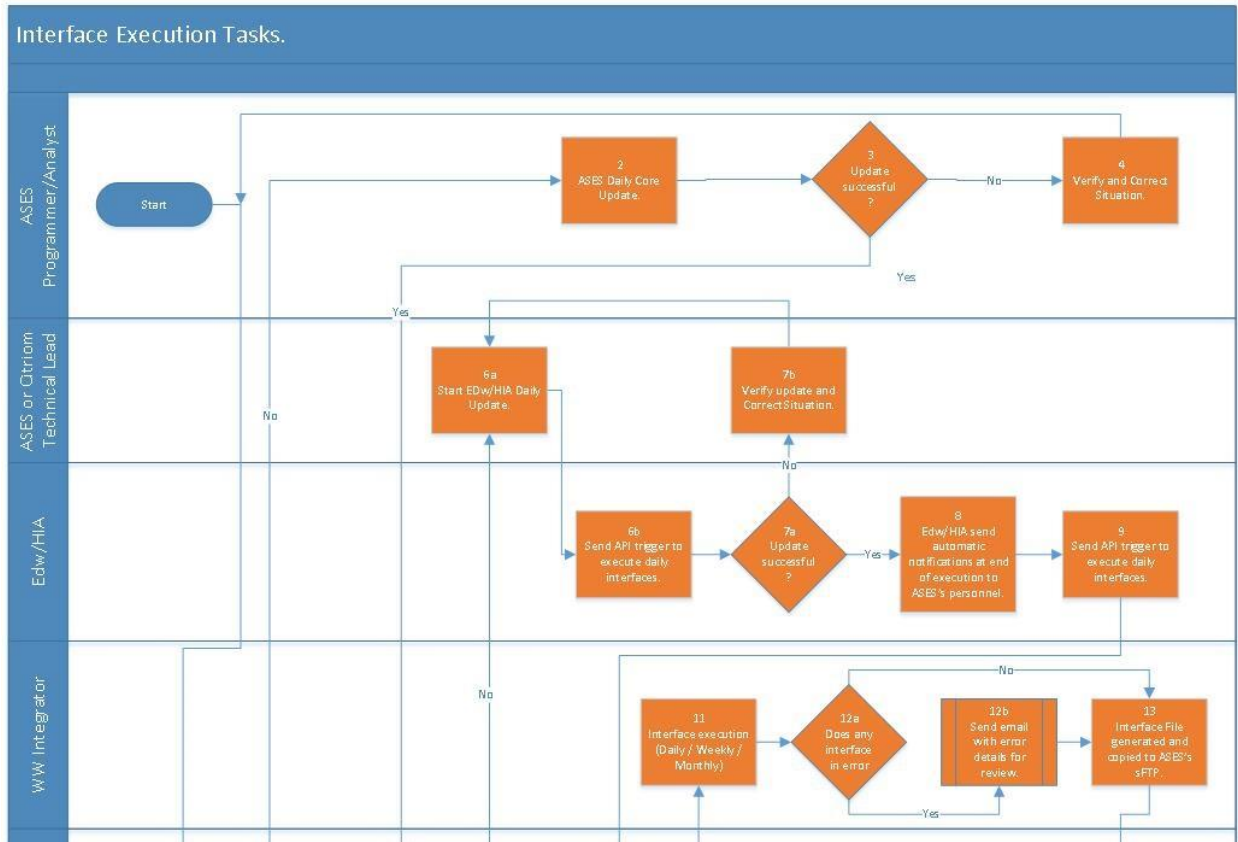
Daily Seq	File name	Functional Area	Frequency	Run days	Date Critical	ASES Update of Core Cutoff Time	HIA Cutoff Time	Data Content	Dependency	Description
1	Provider Enrollment	Provider	Daily	Weekdays	No	4:00 PM	5:00 PM	Daily updates	Contingent on the load from Core to HIA Production	MCO's providers enrollment transactions.
2	Member Eligibility	Member	Daily	Weekdays	Yes	4:00 PM	5:00 PM	Daily updates	Contingent on the load from Core to HIA Production and then GTC running Stored Procedure	Member eligibility transactions.
3	Provider Group Linking	Provider	Daily	Weekdays	No	4:00 PM	5:00 PM	Daily updates	Contingent on the load from Core to HIA Production	Data required for PRMMIS Member Management to create member demographics and eligibility.
4	Member Assignment	Managed Care	Daily	Weekdays	No	4:00 PM	5:00 PM	Daily updates	Contingent on the load from Core to HIA Production.	Member (recipient) assignment to providers from MCO's.
5	Payment Register	Finance	Weekly	Thursday	No	4:00 PM	5:00 PM	Includes all payments from previous week	Contingent on ASES sending payments (dependent on funds availability)	Payment of premium from ASES to the MCOs.
6	Member Recon	Member	Monthly	2nd Business day of every month	No	4:00 PM	5:00 PM	Members eligible on 1st day of current month		Monthly reconciliation of member eligibility. The file has the same layout as the daily member.
6	Capitation History	Managed Care	Monthly	6th Business days of every month.	No	4:00 PM	5:00 PM	Processes data of current month	Contingent on ASES running Premium Payments	ASES premium payments history.
6	MCO Payments	Managed Care	Monthly	6th business day of the month.	No	4:00 PM	5:00 PM	Data in file has a 2 month lag.- e.g., April 2018 will process Feb 2018 data.	Contingent on receipt of payment files from MCOs	Payments done by the MCOs to their providers.

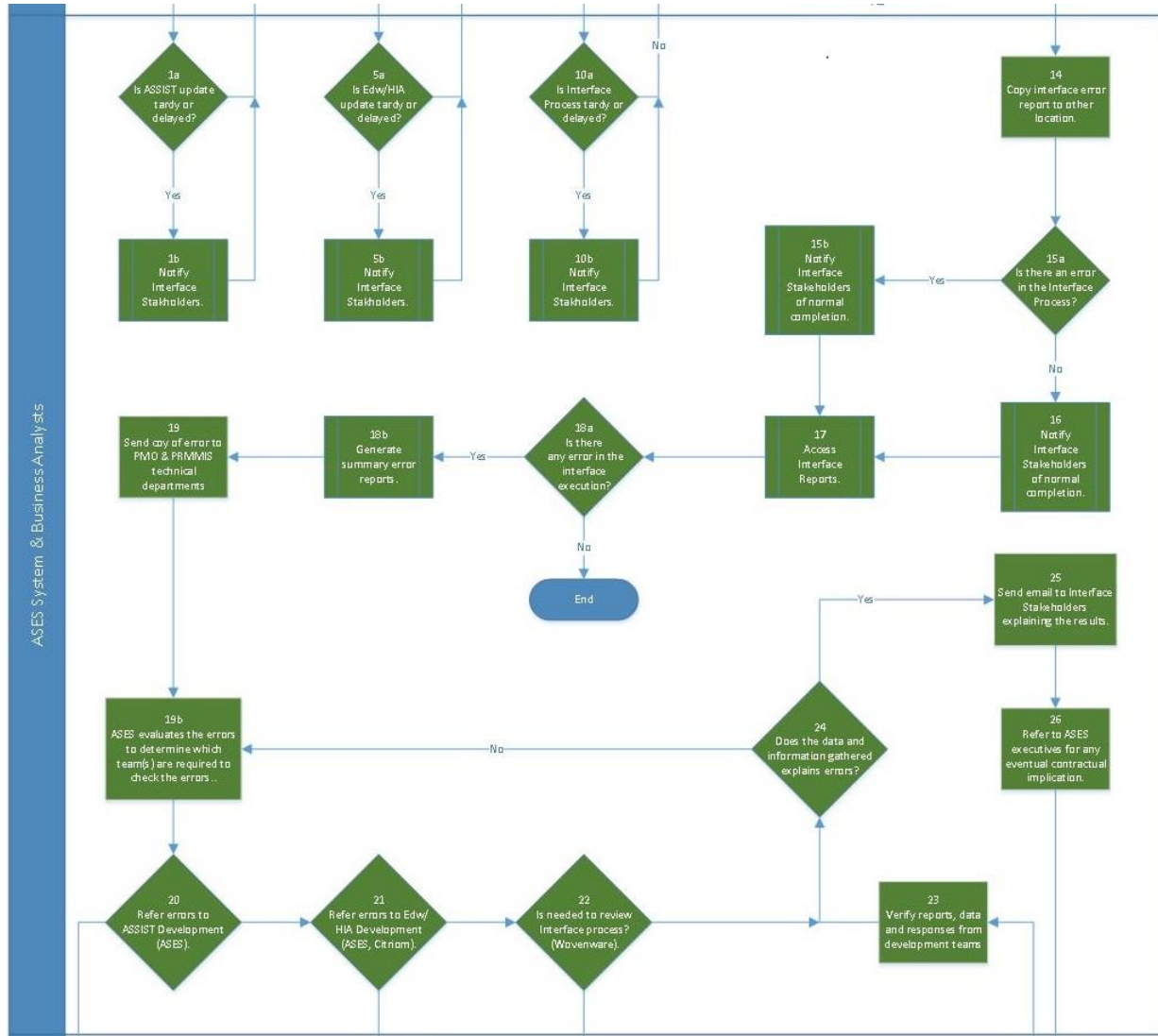
\*Note 2: This table uses the business day from the point of view of ASES. ASES process the Medicaid file a **day after** it was generated by Medicaid. For example, the file generated the 1<sup>st</sup> business day of the month by Medicaid is *usually* processed by ASES the 2<sup>nd</sup> business day of the month.



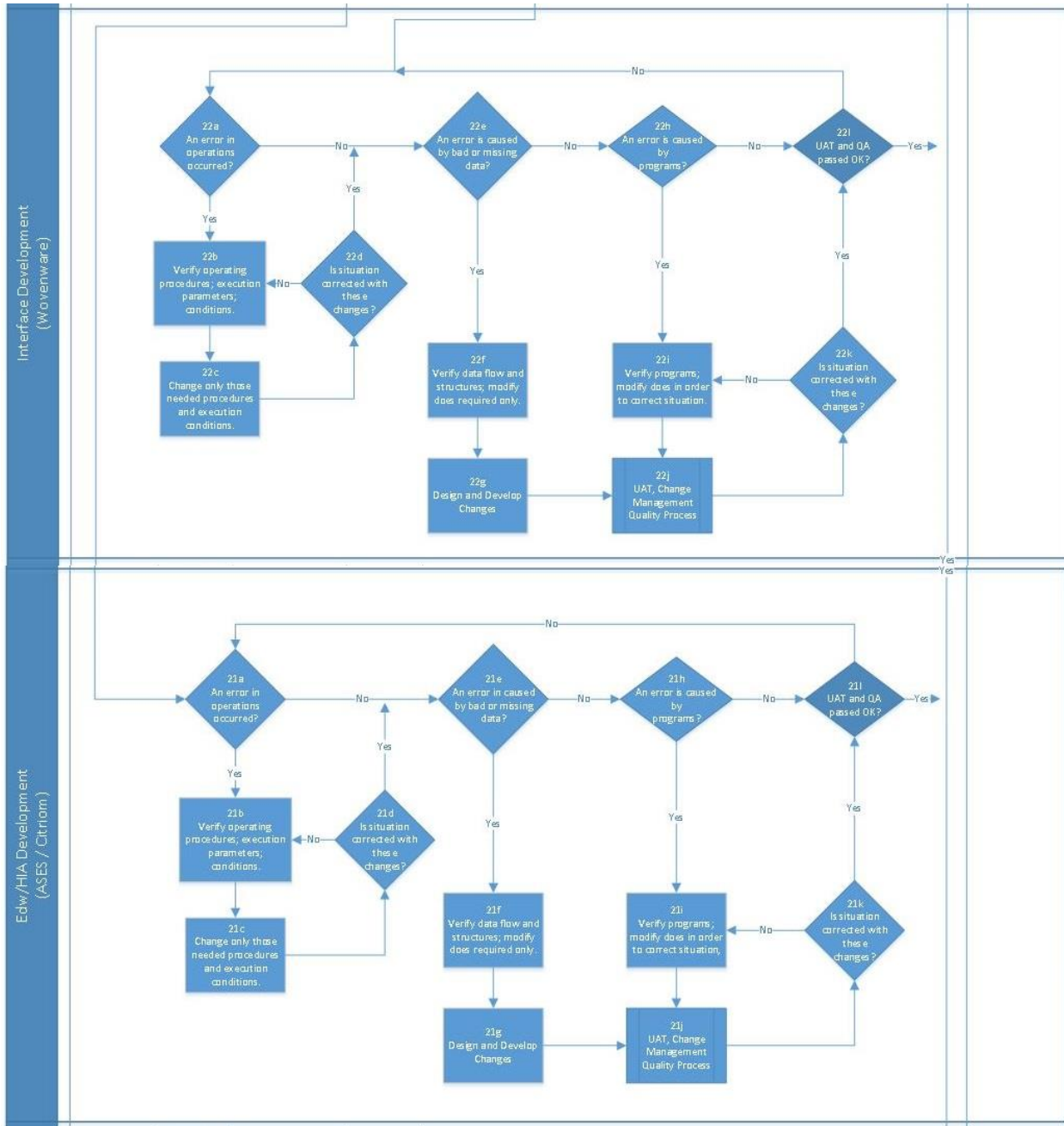
### 6.1.1 Process Flow for Daily, Weekly, and Monthly Interfaces

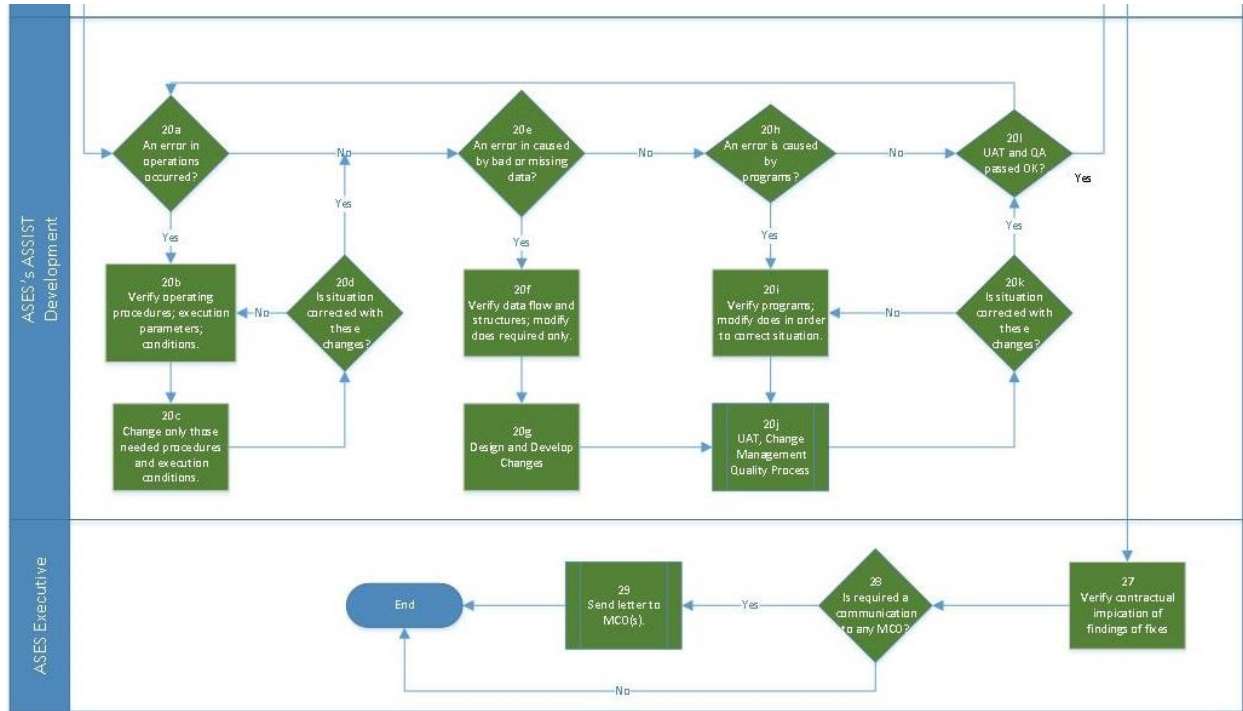
**Figure 3: Process Flow for Daily, Weekly, and Monthly Interfaces**











### 6.1.2 Step-by-Step Procedure for Daily, Weekly, and Monthly Interfaces

**Table 6: Procedure for Daily, Weekly, and Monthly Interfaces**

Step #	Description	Responsible Party
1	If ASSIST's update is tardy or delayed, notify interface process stakeholders.	ASES Operator
2	ASSIST update is carried out.	ASES Operator
3	If update is successful, ASES notifies EDw/HIA operations.	ASES Operator
4	If update was not successful, ASES will verify and rerun the daily updates.	ASES Operator
5	If HIA's update is tardy or delayed, notify interface process stakeholders	ASES System Business Analyst
6	EDw/HIA is updated using daily, weekly, and monthly, if applied, procedures.	ASES Operator
7	If EDw/HIA update was unsuccessful, then verify and correct any situation	ASES Operator
8	If HIA update was successful, then EDw/HIA will send an automatic notification to ASES personnel indicating that it was successful.	EDw/HIA
9	If EDw/HIA was successful, then it will send an automatic application program interface (API) Trigger to the Integrator to execute the pertinent interfaces.	EDw/HIA



Step #	Description	Responsible Party
<b>10</b>	If interfaces execution is tardy or delayed, notify interface process stakeholders.	ASES System Business Analyst
<b>11</b>	The Integrator executes the interfaces. The processing errors are logged in a file.	ASES Operator
<b>12</b>	In case of an execution error, the Integrator sends notification of the error via electronic email. Note: the interface in error can end abnormally, but the other interfaces in the execution block will continue to be executed.	ASES Operator
<b>13</b>	Each interface generates an output data file, which is copied to ASES's SFTP by Integrator.	ASES Operator
<b>14</b>	Copy the error report to other location. This is required because only the last execution's error report is saved.	ASES System Business Analyst
<b>15</b>	In case of an error in the interfaces process: verify, determine cause, and correct if necessary.	ASES System Business Analyst
<b>16</b>	If no errors, notify the interface stakeholders of normal completion.	ASES System Business Analyst
<b>17</b>	Access interface reports.	ASES System Business Analyst
<b>18</b>	If there are errors reported by any interface, generate error summary reports.	ASES System Business Analyst
<b>19</b>	Send a copy of the error reports to Intervoice PR and PRMMIS technical departments.	ASES System Business Analyst
<b>19b</b>	ASES evaluates the errors to determine which team(s) is required to check the errors.	ASES System Business Analyst
<b>20</b>	Refer errors to ASSIST Development (ASES).	ASES System Business Analyst
<b>20a</b>	If an error in operations occurs, go to Step 20b, if not go to Step 20e	ASSIST Development
<b>20b</b>	Verify operating procedures, execution parameters, and conditions.	ASSIST Development
<b>20c</b>	Change only those procedures and execution conditions needed to correct the situation.	ASSIST Development
<b>20d</b>	Is situation corrected with these changes? If yes, go to Step 20e; if not, then go to Step 20b.	ASSIST Development
<b>20e</b>	If an error is caused by bad or missing data, go to Step 20f, if not, go to Step 20h	ASSIST Development
<b>20f</b>	Verify data flow and structures; modification required only to correct the situation.	ASSIST Development
<b>20g</b>	Design and develop changes. Go to Step 22j.	ASSIST Development
<b>20h</b>	If an error is caused by programs, go to Step 20i, if not, go to Step 21a.	ASSIST Development



Step #	Description	Responsible Party
<b>20i</b>	Verify programs; modify to correct situation.	ASSIST Development
<b>20j</b>	Carry out user acceptance testing (UAT), Change Management Quality Process.	ASSIST Development
<b>20k</b>	If the situation was corrected with these changes, go to Step 23, if not, go to Step 20l.	ASSIST Development
<b>20l</b>	Did UAT and QA pass OK? If yes, go to Step 23; if not, then return to Step 20.	ASSIST Development
<b>21</b>	Refer errors to EDw/HIA Development	ASES System Business Analyst
<b>21a</b>	If an error in operations occurs, go to Step 21b, if not, go to Step 21e.	EDw/HIA Development
<b>21b</b>	Verify operating procedures, execution parameters, and conditions.	EDw/HIA Development
<b>21c</b>	Change only those needed procedures and execution conditions to correct the situation.	EDw/HIA Development
<b>21d</b>	Is situation corrected with these changes? If yes, go to Step 20e; if not, the go to 20b.	EDw/HIA Development
<b>21e</b>	If an error is caused by bad or missing data, go to Step 21f, if not, go to Step 21h.	EDw/HIA Development
<b>21f</b>	Verify data flow and structures; modification required only to correct the situation.	EDw/HIA Development
<b>21g</b>	Design and Develop Changes. Go to Step 22j.	EDw/HIA Development
<b>21h</b>	If an error is caused by programs, go to Step 21i, if not, go to Step 22.	EDw/HIA Development
<b>21i</b>	Verify programs; modify to correct situation.	EDw/HIA Development
<b>21j</b>	Carry out UAT, Change Management Quality Process.	EDw/HIA Development
<b>21k</b>	If an error is caused by programs, go to Step 21i, if not, go to Step 22.	EDw/HIA Development
<b>21l</b>	Did UAT and QA pass OK? If yes go to Step 23; if not, then return to Step 21a.	EDw/HIA Development
<b>22</b>	Refer errors to Wovenware to review Interfaces processes.	ASES System Business Analyst
<b>22a</b>	Refer errors to Wovenware to review Interfaces processes.	Interface Development
<b>22b</b>	Verify operating procedures, execution parameters, and conditions.	Interface Development
<b>22c</b>	Change only those needed procedures and execution conditions to correct the situation.	Interface Development



Step #	Description	Responsible Party
<b>22d</b>	Is situation corrected with these changes? If yes, go to Step 20e; if not, the go to 20b.	Interface Development
<b>22e</b>	If an error is caused by bad or missing data, go to Step 22f, if not, go to Step 22h.	Interface Development
<b>22f</b>	Verify data flow and structures; modification required only to correct the situation.	Interface Development
<b>22g</b>	Design and Develop Changes. Go to Step 22j.	Interface Development
<b>22h</b>	If an error is caused by programs, go to Step 22i, if not, go to Step 22j.	Interface Development
<b>22i</b>	Verify programs; modify to correct situation.	Interface Development
<b>22j</b>	Carry out UAT, Change Management Quality Process.	Interface Development
<b>22k</b>	If the situation was corrected with these changes, go to Step 23, if not, go to Step 22l.	Interface Development
<b>22l</b>	Did UAT and QA passed OK? If yes go to Step 23; if not, then return to Step 23a.	Interface Development
<b>23</b>	Verify reports, data, and responses from development teams.	ASES System Business Analyst
<b>24</b>	Does the data and information gathered explain errors?	ASES System Business Analyst
<b>25</b>	Send email to interface stakeholders explaining the results.	ASES System Business Analyst
<b>26</b>	Refer to ASES executives for any eventual contractual implication.	ASES System Business Analyst
<b>27</b>	Verify contractual implication of findings and/or fixes.	ASES Executive
<b>28</b>	Determine if a communication to the MCO(s) is required. If yes, go to Step 29; if not, procedure ends.	ASES Executive
<b>29</b>	Send letter to MCO(s).	ASES Executive

## 6.2 Interface Communication Procedure

Errors, delays, or changes to the interface schedule require communications to interface stakeholders. Possible situations which may necessitate communications include the following:

- ASSIST
  - ◆ Delay
  - ◆ Error
  - ◆ Updates not started by 1:00 pm
- EDw/HIA update error or delays



- ◆ Delay
- ◆ Error
- ◆ Updates not started by 3:00 pm
- Integrator notification indicates:
  - ◆ A late run
  - ◆ A process did not run
  - ◆ It is programmed with the rules and stakeholders to be notified in each case
- Holiday
- System maintenance
- Disaster recovery event
- Any other event that can delay or stop the process at any step
- Successful completion of interfaces processing

If an error occurs during the interface processes, notify stakeholders as listed in the Interfaces Runbook. Please use the following table, which includes telephone numbers and email addresses, to determine the persons you need to notify; these persons are the Interface Stakeholders.

Currently, ASES maintains the "Integrator Notification & Alerts Email Distribution List," which includes:

- The type of notification or alert
- The trigger to execute the notification or alert
- The specific interface affected
- The email addresses of individuals to be contacted

At this time, the same distribution lists are utilized for all the interfaces:

- Daily Member Eligibility
- Daily Provider Mass Enrollment
- Daily Member Assignments
- Monthly Capitation History
- Weekly Payment Register
- Daily Group Linking
- Monthly MCO Payments
- Monthly Member Eligibility Reconciliation

Please contact ASES for the most current distribution lists.

Below is a summary of each type of notification and who should be notified.

### **6.2.1 Notification: Interface File Delivery to SFTP**

#### **Trigger:**



Email notifications will be sent to the distribution list specified below to inform that the file for that specific interface has been uploaded to the SFTP folder.

**Table 7:**

Distribution List
<b>Project Manager’s Architect and Security Lead</b>
<b>Senior Project Manager</b>
<b>DDI Vendor list</b>
<b>PRMMIS notification list</b>
<b>PRMMIS Operations Manager</b>
<b>Project Manager</b>

**6.2.2 Alert: Missed Execution**

**Trigger:**

Email alert to be sent when the API trigger for each specific interface below is not received by the established timeframe.

**Table 8:**

Distribution List
<b>Project Manager’s Architect and Security Lead</b>
<b>Senior Project Manager</b>
<b>DDI Vendor list</b>
<b>PRMMIS notification list</b>
<b>UAT Tester Medicaid</b>
<b>Security_Manager</b>
<b>Business Analyst</b>
<b>MMIS Operations Manager</b>
<b>Operations Lead/PRMMIS PMO</b>

**6.2.3 Alert: Interface Execution Failure (Detailed)**

**Trigger:**

Email alert indicating that something went wrong with the execution of an interface (includes error details).



**Table 9:**

Distribution List
Project Manager’s Architect and Security Lead
Senior Project Manager
DDI Vendor list
PRMMIS notification list
Operations Lead/PRMMIS PMO

**6.2.4 Alert: Interface Execution Failure (Non-Detailed)**

**Trigger:**

Email alert indicating that something went wrong with the execution of an interface (does not include error details).

**Table 10:**

Distribution List
Project Manager’s Architect and Security Lead:
Senior Project Manager
DDI Vendor list
PRMMIS notification list
UAT Tester Medicaid
Security_Manager
Business Analyst
MMIS Operations Manager
Operations Lead/PRMMIS PMO

**6.3 Interface Error Reports Procedures**

**6.3.1 Integrator’s Error Files**

The Wovenware’s Integrator can generate a report for the last execution of each interface. These reports are generated after each execution and must be saved to the designated folder before they are overlaid by a new report.

Important notes regarding error reports:

- **Important:** As of November 30, 2018, the documentation of these reports has not been delivered, thus the message severity is not known yet.
- **Note:** As of November 30, 2018, the reports are not ready for production environment and are not useable as they are. The following are the current issues:
  - ◆ The error reports do not have the following fields:

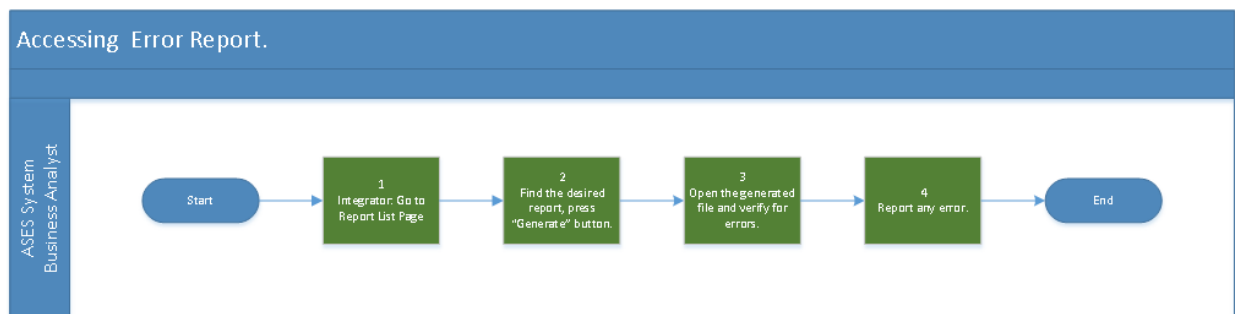




- Date of report generation
  - Date of processed data or execution
  - In case of no error, the report is filled only with the column names, but no *generation* nor *data date*
  - Report lacks *any data or information* to relate the error with *any* source record. In other words, we do not have the data to relate a line in the error report with a line from the source file.
- ◆ Only stores one error report per interface, so when the current interface error report is generated, then the previous run's error report is lost.

### 6.3.1.1 Process Flow for Generate Integrator's Error Reports

**Figure 4: Process Flow for Generate Integrator's Error Reports**



### 6.3.1.2 Step-by-Step Procedure for Generate Integrator's Error Reports

**Table 11: Procedure for Generate Integrator's Error Reports**

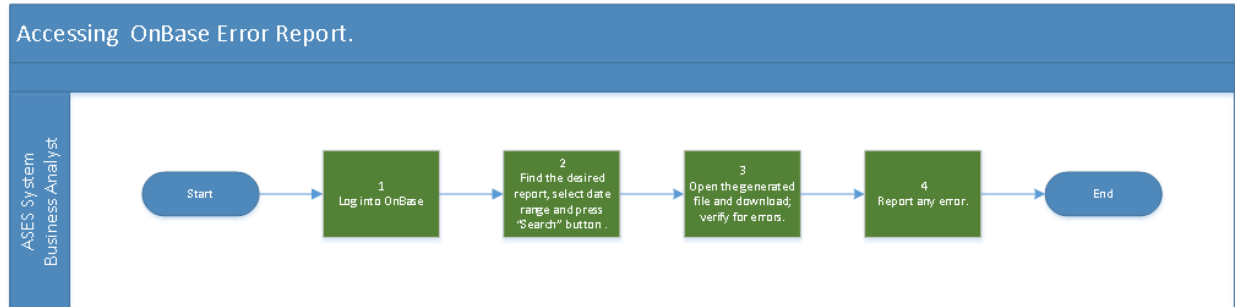
Step #	Description	Responsible Party
1	Go to the Report List, at the Integrator.	ASES Systems Business Analyst
2	Find the wanted interface, press the "generate report" button. This will (1) generate the report and (2) save it as a comma delimited text file.	ASES Systems Business Analyst
3	Open the file and verify the errors. A blank file means no error was generated for that interface.	ASES Systems Business Analyst
4	Report any error.	ASES Systems Business Analyst



## 6.3.2 Generate OnBase Error Reports Procedure

### 6.3.2.1 Process Flow for Generate OnBase Error Reports

**Figure 5: Process Flow for Generate OnBase Error Reports**



### 6.3.2.2 Step-by-Step Procedure for Generate OnBase Error Reports

**Table 12: Procedure for Generate OnBase Error Reports**

Step #	Description	Responsible Party
1	Log into OnBase.	ASES Systems Business Analyst
2	Find the desired report, select date range, and press "Search" button.	ASES Systems Business Analyst
3	Open the generated file and download; verify for errors.	ASES Systems Business Analyst
4	Report any error.	ASES Systems Business Analyst

DXC's OnBase (i.e., PRMMIS) includes many reports at its OnBase facility. Of those, it is required to verify the following reports:

- ELG-5014-D ASES Error Report
- MGD-ASSIGN-ERR-D ASES Assignments Error Reports
- MGD-CAPHIST-ERR-M ASES Payment Errors Reports
- PRV-0150-D Mass Enrollment Preprocessor Error Report
- ELG-1500-M ASES Monthly Reconciliation Discrepancy Report

## 6.4 Schedule Monthly Interface Execution Meeting Procedure

This meeting is included in this standard procedure due to its importance to let all stakeholders know the process of the interfaces for the next month. The EDw/HIA activates a trigger to the Integrator to successfully execute each of the interfaces. These activations are predefined at EDw/HIA and need coordination from the different business partners: Puerto Rico Department of Health (PRDoH), ASES, DXC, and Intervoice. Thus, a meeting must occur to define the calendar:



- One week prior to the first of the month, the PMO should call for a meeting for this purpose, with all the parties needed
- The goal is to set when each interface must run to move the correct data from EDw/HIA to PRMMIS
- Some important topics to be considered when defining the calendar can be:
  - ◆ The holidays in the month considered
  - ◆ Any special events or runs that are known at the moment. For example:
    - Mass payment adjustments
    - Mass member eligibility extensions
    - Special events, like elections
    - Any other unusual event or condition
- Once prepared, the calendar must be sent to *the interface stakeholders*
- It will be updated **every time it is needed**, to guarantee the most stable data transfer from source to target
- The responsibilities matrix is the following:

**Table 13: Interface Execution Schedule Responsibility Matrix**

Activity	Intervoice (PMO)	ASES	Cognosante (IVV)	DXC	PRDOH
<b>Define Interface Schedule</b>	S	C	C	C	I

Legend:  
 Responsible – The person who carries out the task, responsible to get the job done  
 Accountable – The person who is ultimately accountable for the task being completed appropriately  
 Supportive – The person who provides support during the task  
 Consulted – People who are not directly involved in carrying out the task but are consulted (Stakeholder or SME)  
 Informed – Those who receive output from the process or have a need to stay informed

## 7 References

The following items will be used to execute this procedure:

- Interface Descriptions
- Interface Schedule
- Interface Diagrams

### 7.1 Interface Description

The following are descriptions of the interfaces to PRMMIS.



**Table 14: Interface Descriptions**

#	Functional Area	Title	Description
1	Member	Daily Member Eligibility	<p>This data file will be sent to PRMMIS from ASES and will contain the data required for PRMMIS Member Management to create member demographics and eligibility.</p> <p>The daily file will be processed to add new members or update existing members. Member demographics and eligibility information will be provided on the file.</p>
2	Provider	Daily Provider Mass Registration Enrollment	<p>The PRMMIS accepts Provider Registration files from ASES. The files are used to register (add) providers that are currently not registered in the PRMMIS and update provider information already in the PRMMIS. These providers are members of the MCO contracted provider network and treat Puerto Rico Medicaid Recipients who are enrolled with an MCO.</p> <p>This interface will be used to register (add) providers that are currently not registered in the DXC interChange and updates provider information for providers already enrolled in the DXC interChange.</p>
3	Managed Care	Daily Member Assignments	<p>The data file will be sent to the PRMMIS from ASES and will contain the data required for the PRMMIS Managed Care subsystem to create recipient assignments.</p> <p>The exchange of data will be as follows:</p> <ul style="list-style-type: none"> <li>▪ PRMMIS Inbound - ASES assignments will be sent to PRMMIS via a defined file</li> <li>▪ PRMMIS Outbound - OnBase report will be generated</li> </ul> <p>This interface will process the ASES provider assignments inbound file containing the following transactions:</p> <ul style="list-style-type: none"> <li>▪ Enrollments</li> <li>▪ Dis-enrollments</li> </ul>
4	Managed Care	Monthly Capitation History	<p>This data file will be sent to PRMMIS from ASES and will contain the data required for the PRMMIS Managed Care subsystem to process capitation transactions.</p> <p>The exchange of data will be as follows:</p> <ul style="list-style-type: none"> <li>▪ PRMMIS Inbound - ASES Capitation Premiums History transactions will be sent to PRMMIS via a defined file</li> <li>▪ PRMMIS Outbound - OnBase report will be generated</li> </ul> <p>Every month ASES pays the MCOs including Platinos for people who are enrolled. There are monthly</p>



#	Functional Area	Title	Description
			<p>premiums (capitations) that are paid in advance, prorated premiums (capitations), and adjustments. These are the basis for payments to carriers and basis for obtaining funds from Centers for Medicare &amp; Medicaid Services (CMS). The financial information that CMS receives is from this data.</p> <p>Key fields are Billing Month and Accounting Premium Date. The accounting premium date (YYYYMM) applies to the paid month's span.</p> <p>There is also an adjustment type (ADJUST_TYPE) field that is used to differentiate the regular premium payments from the adjustments.</p> <ul style="list-style-type: none"> <li>▪ For the regular payments, the adjustment type will be 0 - Paid premium record</li> <li>▪ The adjustments will contain two records:             <ul style="list-style-type: none"> <li>– Value 1 - Original record which has been adjusted</li> <li>– Value 2 - Will be the actual adjustment record</li> </ul> </li> </ul>
5	Financial	Weekly Payment Register	<p>This data file sent to DXC from MIP will contain the data required for DXC Financial to account for the actual payments made to the Carriers. These payments will be compared to the ASES payment registry to ensure that all allocated payments are distributed, and that the CMS-64 report correctly reports the funds.</p> <p>This interface is needed to balance and verify the distribution of payments to the Carriers and to ensure the CMS-64 report accurately reflects the funds released to the Carriers.</p>
6	Managed Care	Monthly MCO Payments	<p>This note defines the MCO capitation payments (HIA_CAPITATION_HIST table) interface file layout for the data that will be exchanged between PRMMIS and ASES. This data file will be sent to PRMMIS from ASES and will contain the data required for the PRMMIS Managed Care subsystem to keep track of what the MCOs paid to their capitated providers.</p> <p>The exchange of data will be as follows:</p> <ul style="list-style-type: none"> <li>▪ PRMMIS Inbound - ASES MCOs Capitation Payments History transactions will be sent to PRMMIS via a defined file</li> <li>▪ PRMMIS Outbound - OnBase report will be generated</li> </ul> <p>During the MCOs monthly capitation process, a capitation transaction is generated for each Primary Medical Provider (PMP) assignment that was effective at some point in time during the capitation month.</p>



#	Functional Area	Title	Description
			This will be provided to PRMMIS from ASES containing the MCOs capitation transactions and adjustments. Records will be processed, and data will be populated on the PRMMIS Managed Care tables. OnBase reports will be generated with the failure records.
7	Member	Monthly Member Eligibility Reconciliation	<p>This data file will be sent to PRMMIS from ASES and will contain the data required for PRMMIS Member Management to create the Reconciliation Discrepancies report. This report will list the differences between the ASES database and the PRMMIS database.</p> <p>The monthly file will be processed to compare the ASES database to the PRMMIS database. Member demographics and eligibility information will be provided on the file. No adds, updates, or terminations will be applied to the PRMMIS database from this monthly process. PRDoH or ASES will provide the correction for any discrepancy found by this process, if needed. Eligibility compares will be at the Benefit Plan Level (COVERAGE_CODE).</p> <p>The Reconciliation Discrepancies report will be produced as part of the monthly process. This report will also include members who are active eligible in PRMMIS and not in the incoming transaction file, and members who are in the incoming file but are not in PRMMIS.</p>
8	Provider	Daily Group Linking	<p>This interface receives provider linking/de-linking files from ASES. These files are used to link and de-link individual providers to MCOs or PMGs. This will allow Puerto Rico to link/de-link an individual provider to a carrier and to link/de-link an individual provider to a PMG.</p> <p>This interface will be used to link or de-link the provider members to a Provider Group in the PRMMIS.</p>

## 7.2 Interface Schedule

Below are the interfaces that need to be monitored throughout the process:

- Daily Member Eligibility
- Daily Provider Enrollment
- Daily Member Assignments
- Monthly Capitation History
- Weekly Payment Register
- Daily Group Linking



- Monthly MCO Payments
- Monthly Member Eligibility Reconciliation



Figure 6:Interface Schedule

SI#	File name	Functional Area	Frequency	Run days	Max Exact Time	Date Critical	Stored Procedure Max Time
1	Member Eligibility	Member	Daily	Weekdays	2 min 4 seconds - 167,048 records		
2	Member Recon	Member	Monthly	2nd Business day of every month	9 min 47 seconds, 985,127 records		
3	Provider Enrolment	Provider	Daily	Weekdays	2 min 48 seconds, 17,665 records		N/A
4	Provider Group Linking	Provider	Daily	Weekdays	45 seconds 11, 059 records		N/A
5	Member Assignment	Managed Care	Daily	Weekdays	55 seconds 39,662 records		N/A
6	Capitation History	Managed Care	Monthly	6th Business days of every month. If ASES needs to do another large adjustment, we would request ASES to run Capitations by the 4th to run this on the 5th Business day of the month to make the cutoff time on the 6th.	Jan - 4 hours, 27 min, 5 secs 16.2+ million records  Dec - 25 min, 29 secs 1.5 million		N/A
7	MCO Payments	Managed Care	Monthly	6th business day of the month.	1.08 hours 9.5 + million records  3 hours, 19 min 7.2+ million records		N/A
8	Payment Register	Finance	Weekly	Thursday	2 secs 64 records		N/A





Daily Seq	Cut-off time to submit the file to DXC	Batch cycle pick up time	Data Content	Any exception for Production vs Test region	Dependency
2	Estimate 6:30 PM AST	7 PM AST	Daily updates	No	Contingent on the load from Core to HIA Production and then GTC running Stored Procedure
6	Estimate 7:00 PM AST	After Daily Member	Members eligible on 1st day of current month	No	
1	Estimate 5:30 PM AST	6 PM AST	Daily updates	No	Contingent on the load from Core to HIA Production
3	Estimate 7:30 PM AST	8 PM AST	Daily updates	No	Contingent on the load from Core to HIA Production
4 Need to run Member Assignment Baseline first on March 2 with 2/28/2018 date	Estimate 7:45 PM AST	After Member Eligibility and Provider Group Linking are executed	Daily updates	No	Contingent on the load from Core to HIA Production.
6	Estimate 7:30 PM AST	8 PM AST	Processes data of current month	No	Contingent on ASES running Premium Payments
6	Estimate 7:30 PM AST	8 PM AST	Data in file has a 2 month lag.-e.g., April 2018 will process Feb 2018 data.	No	Contingent on receipt of payment files from MCOs
5 For March 1, we will need to run on Friday March 2	11:00 PM AST	11:55 PM AST	Includes all payments from previous week	No	Contingent on ASES sending payments (dependent on funds availability)



## **7.3 Interface Diagrams**

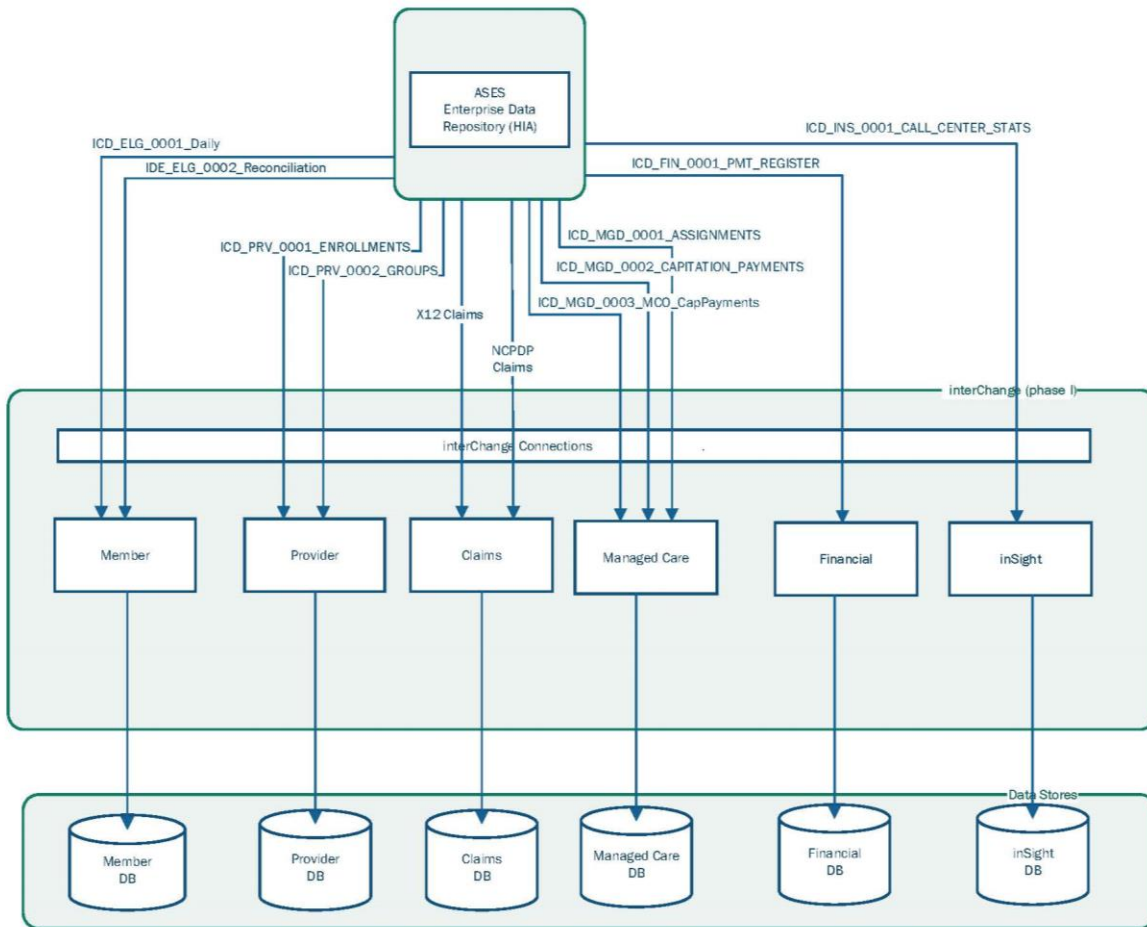
### **7.3.1 Interface Summary**

These diagrams summarize the interface process. As previously stated, there are 8 interfaces, which are referenced in this section:

1. Daily:
  - a. Provider Mass Registration.
  - b. Member Eligibility.
  - c. Provider Group Linking.
  - d. Member Assignments.
2. Weekly:
  - a. Payment Register.
3. Monthly:
  - a. Member Eligibility Reconciliation.
  - b. Capitation Payments.
  - c. MCO Payments.



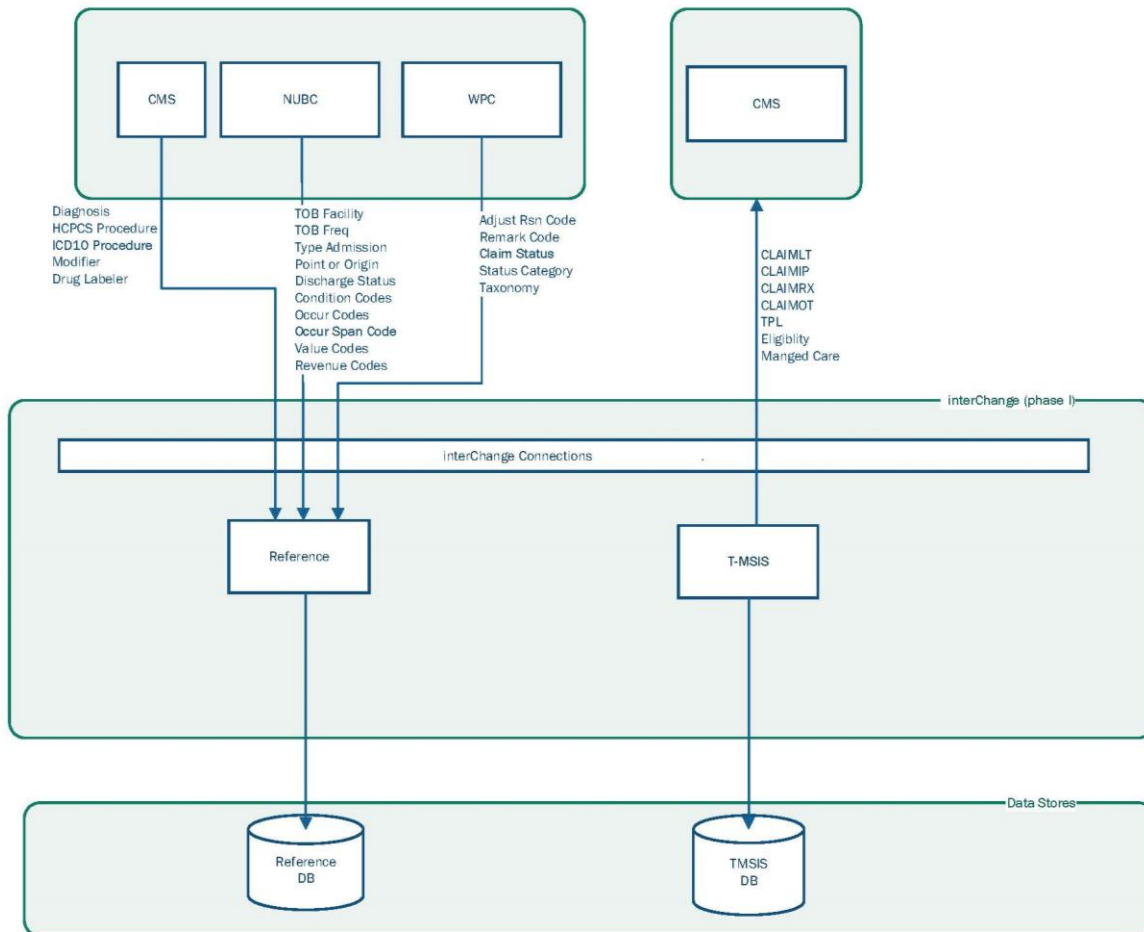
Figure 7: Interface Summary





### 7.3.2 Databases Overview

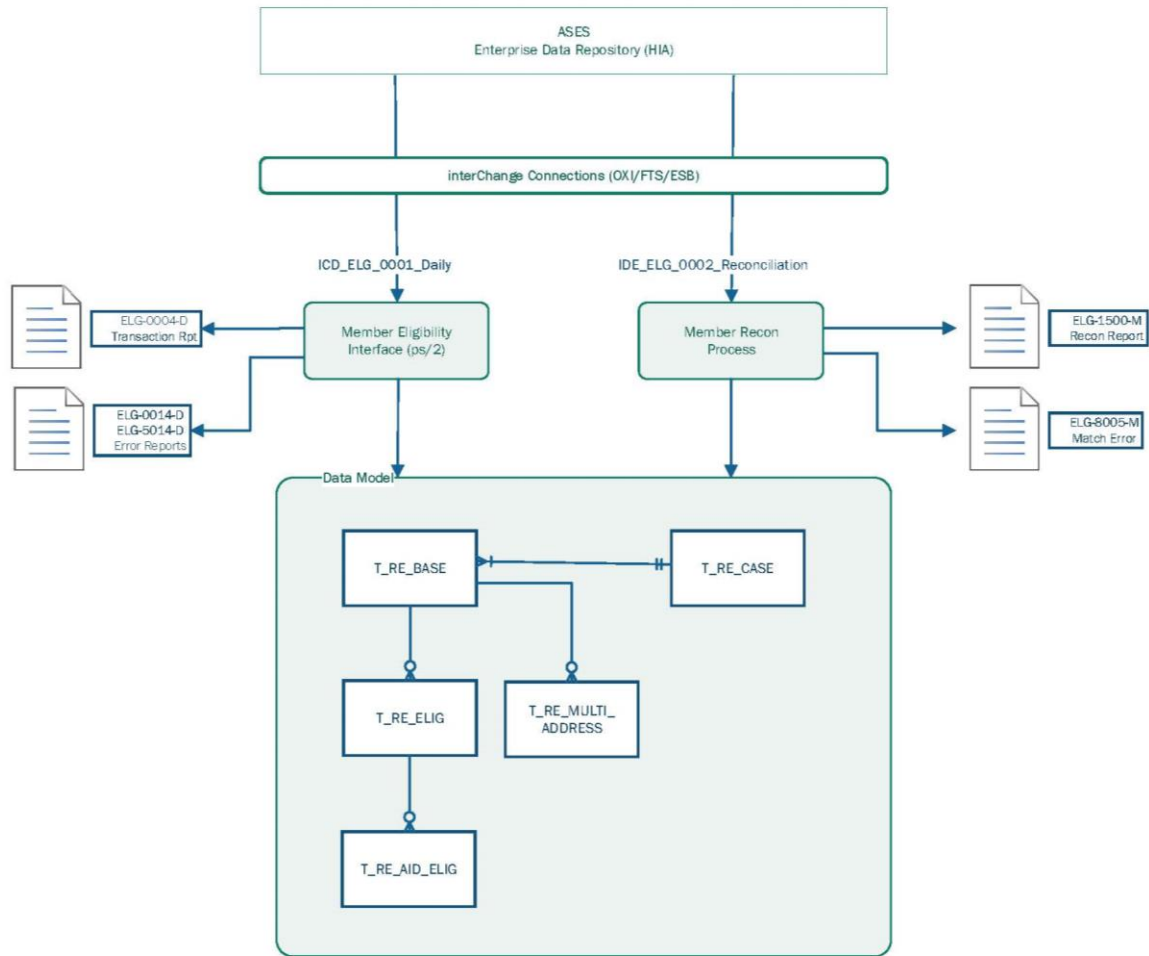
Figure 8: Databases Overview





### 7.3.3 Member Eligibility Interfaces

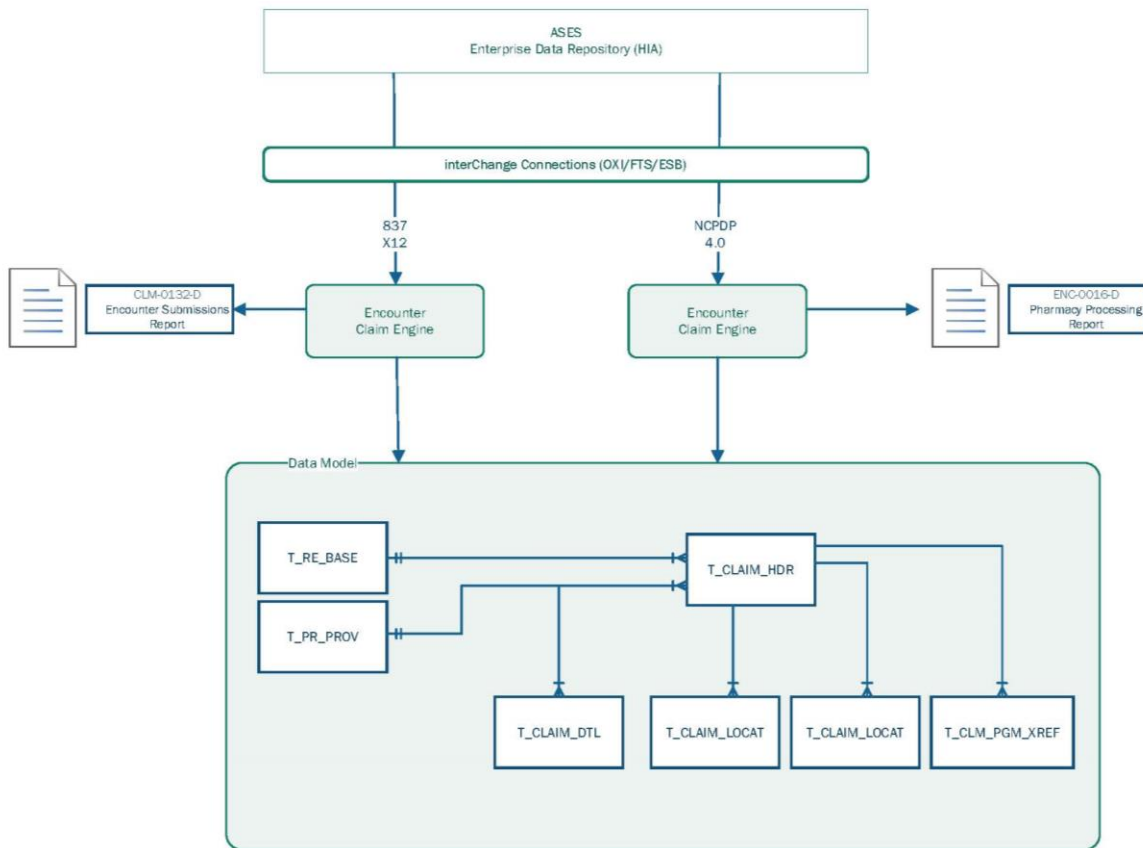
Figure 9: Member Eligibility Interfaces





### 7.3.4 Encounter/Claim Interfaces

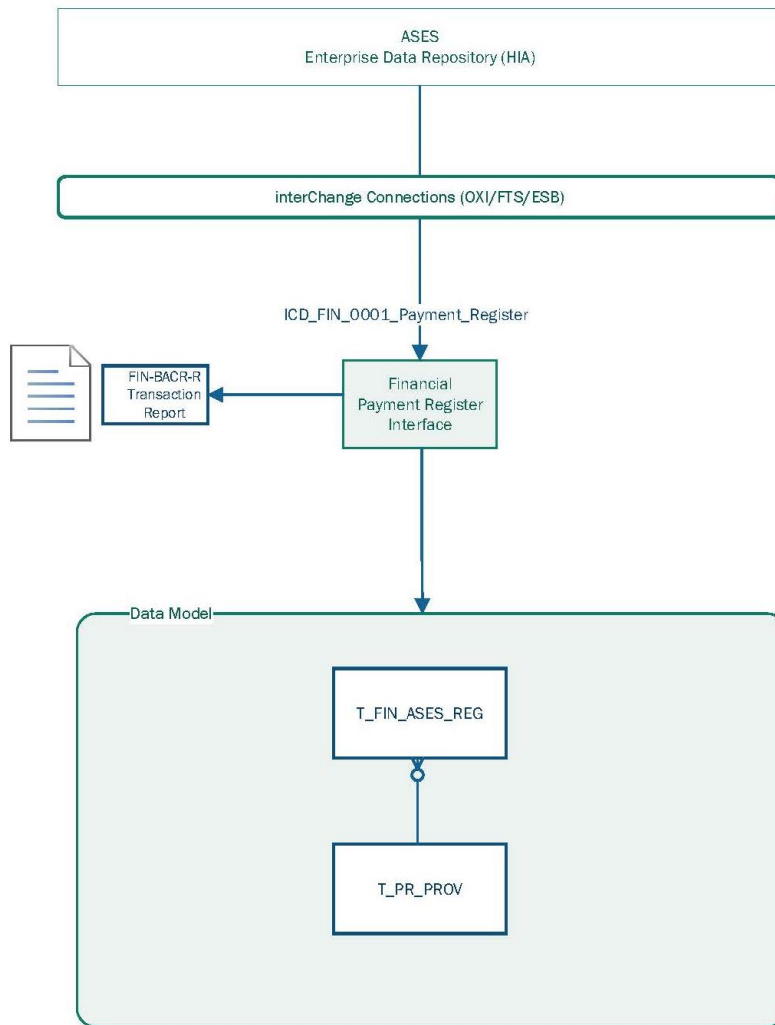
Figure 10: Encounter/Claim Interfaces





### 7.3.5 Payment Register Interface

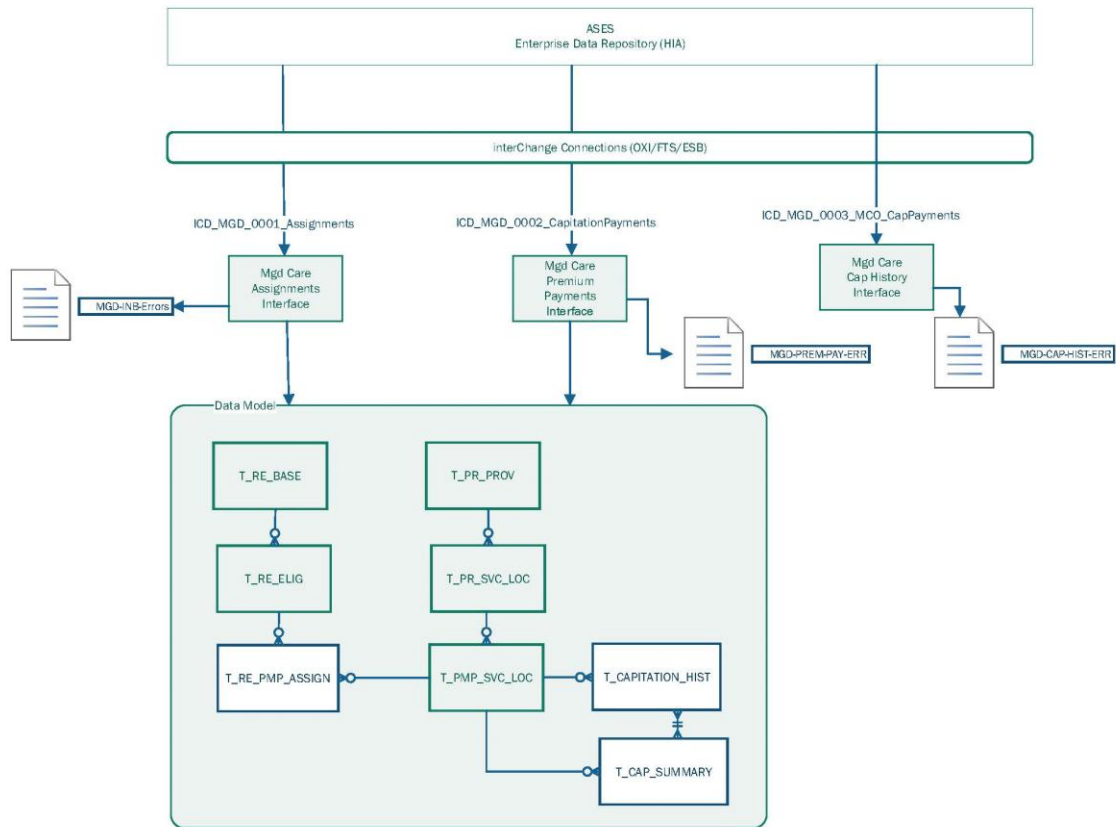
Figure 11: Payment Register Interface





### 7.3.6 Assignments & Capitation Interfaces Summary

Figure 12: Assignments & Capitation Interfaces Summary

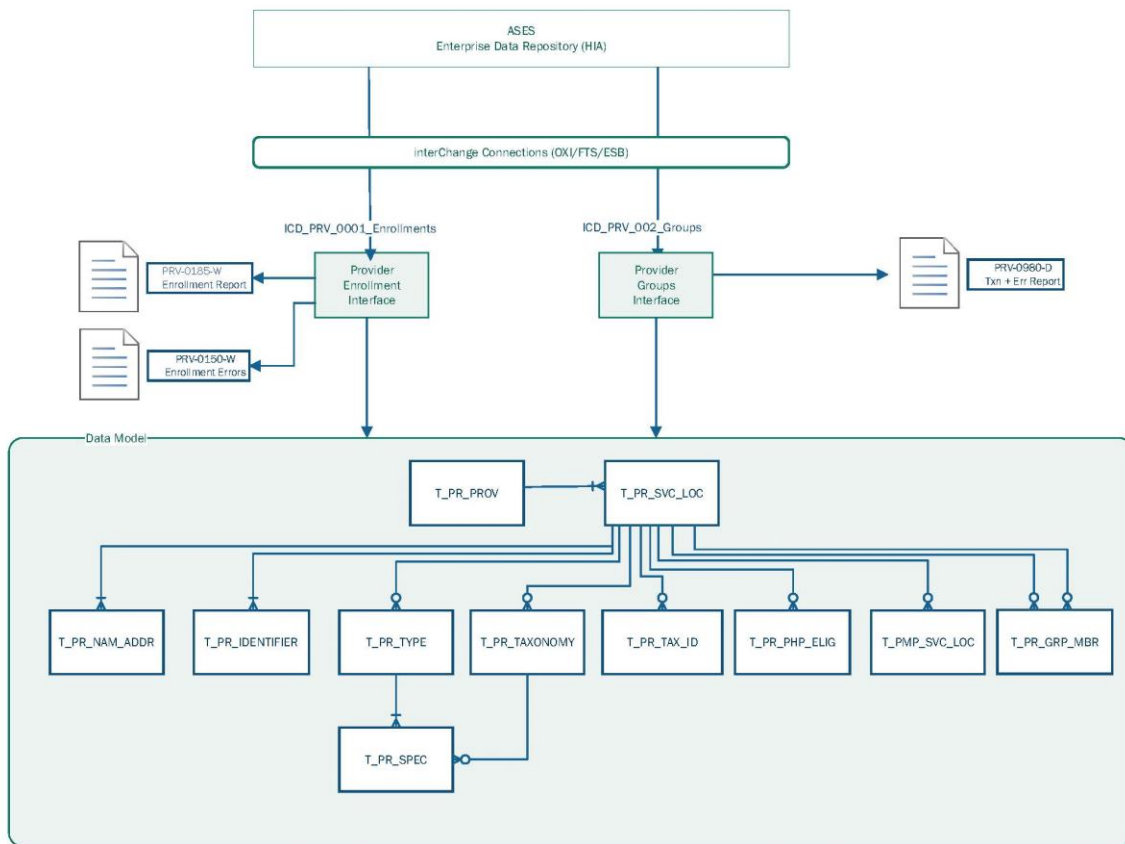






### 7.3.7 Provider Enrollments and Group Interfaces

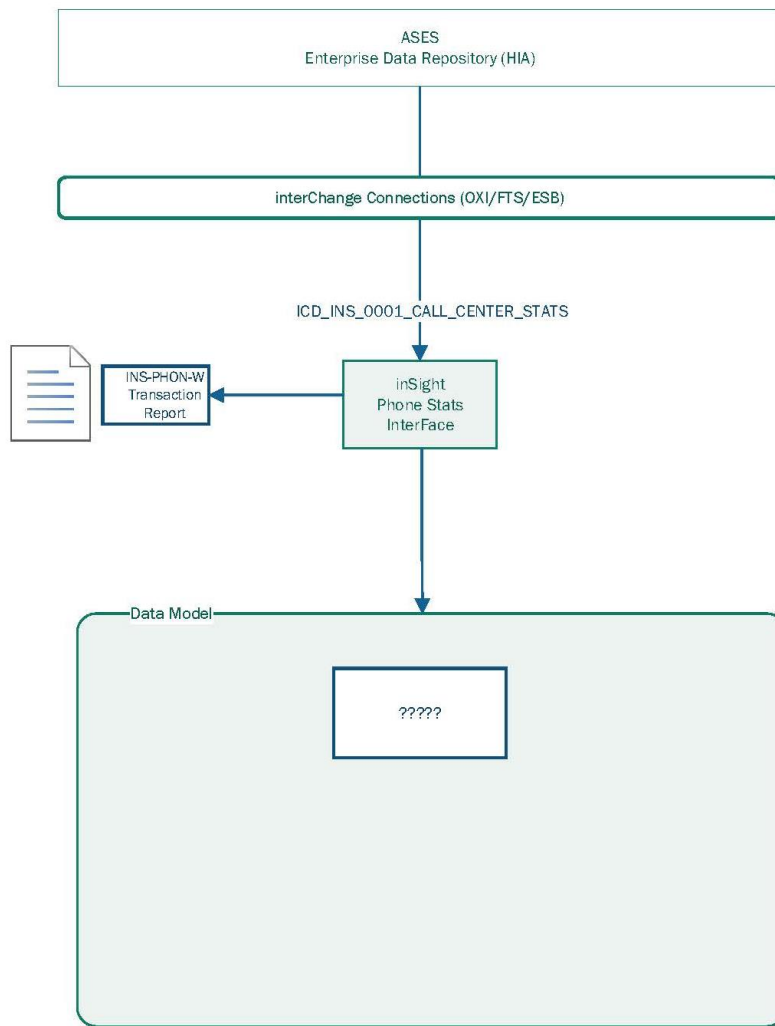
Figure 13: Provider Enrollments and Group Interfaces





### 7.3.8 Call Center Statistics Interface

Figure 14: Call Center Statistics Interface





## 8 Key Performance Indicators

The following table contains the indicators that are used to measure the effectiveness of the Interface Management SOP.

**Table 15: Key Performance Indicators**

Activity	Goal	Explanation	Type of Metric
<b>ASSIST (ASES's Core)</b>	Update Process	It should end at 1:00pm or before.	Met/Not Met
<b>EDw/HIA</b>	Daily Update	It must end at 5:00pm.	Met/Not Met
<b>Interfaces</b>	Daily Execution	It must end at 7:00pm AST or before.	Done/Not Done
<b>Interface Execution Time</b>	Management	Maintain an execution log for all interfaces to manage and fine tune the execution time.	Met/Not Met
<b>Interface Number of Records Processed</b>	Management	Maintain an execution log for all interfaces to manage and fine tune the execution time.	Met/Not Met



# 9 Data Models

## 9.1 Daily Member Assignments

GTC_ASES_ASES_FAM_ELIG_HST	
P * ID	NUMBER (25)
FAM_ID	VARCHAR2 (11 BYTE)
FAMILY_SSN	VARCHAR2 (9 BYTE)
UPDATE_DATE	DATE
UPDATE_USER	VARCHAR2 (8 BYTE)
CERTIFICATION_DATE	DATE
ELIGIBILITY_EFF_DATE	DATE
ELIGIBILITY_EXP_DATE	DATE
ELIGIBILITY_CAN_DATE	DATE
EFF_CARRIER_DATE	DATE
PRIMARY_CENTER	VARCHAR2 (4 BYTE)
REGION_ASES	VARCHAR2 (1 BYTE)
REGION_CODE	VARCHAR2 (11 BYTE)
CARRIER	VARCHAR2 (2 BYTE)
REGION	VARCHAR2 (1 BYTE)
MUNICIPALITY	VARCHAR2 (4 BYTE)
CONTRACT_NUMBER	VARCHAR2 (13 BYTE)
AUTO_ENROLL_INDICATOR	VARCHAR2 (1 BYTE)
AUTO_ENROLL_DATE	DATE
GROUP_ID	VARCHAR2 (10 BYTE)
MONTHLY_INCOME	NUMBER (18)
RESOURCES	NUMBER (19)
ELIGIBILITY_DED_LEVEL	VARCHAR2 (10 BYTE)
ELIGIBILITY_PERCENT_COPY	NUMBER (19)
HORE_DENAL_CODE	VARCHAR2 (2 BYTE)
MEMBERS	NUMBER (19)
MEMBERS_ELIGIBLE	NUMBER (19)
MEMBERS_MED_A	NUMBER (19)
MEMBERS_MED_AB	NUMBER (19)
PREV_MEMBERS_ELIGIBLE	NUMBER (19)
ELIGIBILITY_CAN_RSN	VARCHAR2 (2 BYTE)
OPTIONAL_DEPENDANTS	NUMBER (19)
MANCOMUNADO	VARCHAR2 (1 BYTE)
ELA_IRRIGORS	VARCHAR2 (19 BYTE)
NEW_CARRIER	VARCHAR2 (19 BYTE)
NEW_PRIMARY_CENTER	VARCHAR2 (4 BYTE)
CHANGE_EFF_DATE	DATE
CHANGE_RSN	VARCHAR2 (2 BYTE)
NEW_CARRIER_EFF_DATE	DATE
PRIMARY_CENTER_EFF_DATE	DATE
PRIMARY_CENTER_PCF_CHG_RSN	VARCHAR2 (2 BYTE)
MEDTI_MEM_ID	VARCHAR2 (11 BYTE)
CREATED_BY	VARCHAR2 (250 BYTE)
CREATED_ON	DATE
UPDATE_BY	VARCHAR2 (250 BYTE)
UPDATED_ON	DATE
TLOG_ID	NUMBER
MEDICAD_CANCELLATION_DATE	DATE
REGION_MOVE_IN_DATE	DATE
POVERTY_LEVEL_VALUE	NUMBER (4)
DATA_SOURCE	VARCHAR2 (2 BYTE)
DATE_MIGRADO	DATE

GTC_ASES_ASES_MEM_ELIG_HST	
P * ID	NUMBER (25)
MEM_MPI	VARCHAR2 (13 BYTE)
FAM_ID	VARCHAR2 (11 BYTE)
FAM_MEM_SUFFIX	VARCHAR2 (2 BYTE)
CARRIER	VARCHAR2 (2 BYTE)
ELIGIBILITY_IND	VARCHAR2 (1 BYTE)
MEM_CERTIFICATION_DATE	DATE
SPECIAL_ENROLL	VARCHAR2 (1 BYTE)
CARRIER_EFF_DATE	DATE
REGION	VARCHAR2 (1 BYTE)
REGION_CODE	VARCHAR2 (11 BYTE)
MUNICIPALITY	VARCHAR2 (4 BYTE)
BIRTH_DATE	DATE
SEX	VARCHAR2 (1 BYTE)
UPDATE_DATE	DATE
UPDATE_USER	VARCHAR2 (8 BYTE)
MEDICARE_IND	VARCHAR2 (1 BYTE)
CARD_ID_DATE	VARCHAR2 (2 BYTE)
NEW_PLAN_TYPE	VARCHAR2 (2 BYTE)
PLAN_VERSION	VARCHAR2 (2 BYTE)
PLAN_VERSION_EFF_DATE	DATE
CONTRACT_NUMBER	VARCHAR2 (13 BYTE)
COVERAGE_CODE	VARCHAR2 (2 BYTE)
MEM_PRIMARY_CENTER	VARCHAR2 (4 BYTE)
MEM_PRIMARY_CENTER_EFFDATE	DATE
PCPI	VARCHAR2 (15 BYTE)
PCPI_EFF_DATE	DATE
PCPI2	VARCHAR2 (15 BYTE)
PCPI2_EFF_DATE	DATE
CARD_ID_NUMBER	VARCHAR2 (15 BYTE)
CARD_ID_DATE	VARCHAR2 (2 BYTE)
ELA_INDICATOR	VARCHAR2 (1 BYTE)
PRIMARY_CENTER_PCF_CHG_RSN	VARCHAR2 (2 BYTE)
MEDICAD_IND	VARCHAR2 (19 BYTE)
GROUP_ID	VARCHAR2 (10 BYTE)
RELATIONSHIP	VARCHAR2 (2 BYTE)
NEW_CARRIER	VARCHAR2 (2 BYTE)
NEW_CARRIER_EFF_DATE	DATE
BIRTH_PLACE	VARCHAR2 (1 BYTE)
MARITAL_STATUS	VARCHAR2 (1 BYTE)
EDUCATION_LEVEL	VARCHAR2 (1 BYTE)
PREGNANCY_IND	VARCHAR2 (1 BYTE)
DENAL_CODE	VARCHAR2 (2 BYTE)
AGENCY	VARCHAR2 (8 BYTE)
NEW_PCPI	VARCHAR2 (15 BYTE)
NEW_PCPI2	VARCHAR2 (15 BYTE)
NEW_PCPI2_EFF_DATE	DATE
ELA_IRRIGORS	VARCHAR2 (19 BYTE)
NEW_MEM_PRIMARY_CENTER	VARCHAR2 (4 BYTE)
NEWMEMPRIMARYCENTREFFDATE	DATE
PREV_MEM_ID	VARCHAR2 (19 BYTE)
PLAN_TYPE	VARCHAR2 (2 BYTE)
PLAN_VERSION	VARCHAR2 (2 BYTE)
NEW_PLAN_VERSION_EFF_DATE	DATE
INSTITUTIONAL_STATUS	VARCHAR2 (11 BYTE)
PIC_NUMBER	VARCHAR2 (2 BYTE)
AUTO_ENROLL_INDICATOR	VARCHAR2 (1 BYTE)
DATE	DATE
IPA_ESPECIAL	VARCHAR2 (19 BYTE)
CMS_CERT_STATUS	VARCHAR2 (2 BYTE)
NEW_CONTRACT_NUMBER	VARCHAR2 (13 BYTE)
MEM_DED_LEVEL	VARCHAR2 (19 BYTE)
MEM_POVERTY_LEVEL	VARCHAR2 (2 BYTE)
MEM_CREDITABLE_INCOME	NUMBER (18,2)
MEM_GROUP_COUNT	NUMBER (19,2)
MEM_SS	VARCHAR2 (2 BYTE)
MEM_SS_ORIGINAL	VARCHAR2 (250 BYTE)
GTC_TYP	NUMBER (19)
MEMBER_ID	VARCHAR2 (250 BYTE)
CREATED_BY	VARCHAR2 (250 BYTE)
CREATED_ON	DATE
UPDATE_BY	VARCHAR2 (250 BYTE)
UPDATED_ON	DATE
TLOG_ID	NUMBER
TYPE	VARCHAR2 (50 BYTE)
STATUS	VARCHAR2 (50 BYTE)
COVERAGE_DET	VARCHAR2 (50 BYTE)
ENROLL_DET	VARCHAR2 (50 BYTE)
ENROLL_FUT_DET	VARCHAR2 (50 BYTE)
PMG_DET	VARCHAR2 (50 BYTE)
PMG_FUT_DET	VARCHAR2 (50 BYTE)
ENROLL_EFF_DATE	DATE
ENROLL_FUT_EFF_DATE	DATE
PMG_EFF_DATE	DATE
PMG_FUT_EFF_DATE	DATE
ADJUST_TYPE	VARCHAR2 (2 BYTE)
EE_EFF_DATE	DATE
END_EFF_DATE	DATE
COST_SHARING_FLAG	VARCHAR2 (11 BYTE)
CONTACT_MEMBER	VARCHAR2 (11 BYTE)
MAX_COPY	NUMBER
GROUP_CODE	VARCHAR2 (3 BYTE)
EXTENSION_FLAG	VARCHAR2 (10 BYTE)
APP_NUM	VARCHAR2 (19 BYTE)
SPEND_DOWN_FLAG	VARCHAR2 (11 BYTE)
GENDER	VARCHAR2 (11 BYTE)
RATE_CELL_ID	VARCHAR2 (8 BYTE)
PMG_TAX_ID	VARCHAR2 (8 BYTE)
NEW_PMG_TAX_ID	VARCHAR2 (8 BYTE)
NEW_CARD_ID_DATE	DATE

GTC_ASES_ASES_PROVIDER_HST	
P * ID	NUMBER
PROV_CARRIER	VARCHAR2 (2 BYTE)
PROV_ID	VARCHAR2 (25 BYTE)
PROV_LNAME	VARCHAR2 (100 BYTE)
PROV_PNAME	VARCHAR2 (100 BYTE)
PROV_MNAME	VARCHAR2 (100 BYTE)
PROV_ADDR1	VARCHAR2 (100 BYTE)
PROV_ADDR2	VARCHAR2 (100 BYTE)
PROV_ADDR3	VARCHAR2 (100 BYTE)
PROV_CITY	VARCHAR2 (45 BYTE)
PROV_STATE	VARCHAR2 (45 BYTE)
PROV_ZIP	VARCHAR2 (9 BYTE)
PROV_COUNTRY	VARCHAR2 (45 BYTE)
PROV_TEL	VARCHAR2 (50 BYTE)
PROV_EXT	VARCHAR2 (20 BYTE)
PROV_EMAIL	VARCHAR2 (40 BYTE)
PROV_CONTACT	VARCHAR2 (50 BYTE)
PROV_TYPE	VARCHAR2 (50 BYTE)
SPEC1	VARCHAR2 (20 BYTE)
SPEC2	VARCHAR2 (20 BYTE)
SPEC3	VARCHAR2 (20 BYTE)
SPEC4	VARCHAR2 (20 BYTE)
NETWORK_SPECIALIST	VARCHAR2 (1 BYTE)
FEDERAL_TAX_ID	VARCHAR2 (25 BYTE)
LICENCE_NUMBER	VARCHAR2 (15 BYTE)
UPIN	VARCHAR2 (15 BYTE)
DEA_NUMBER	VARCHAR2 (20 BYTE)
MEDICARE_NUMBER	VARCHAR2 (20 BYTE)
MEDICAD_NUMBER	VARCHAR2 (20 BYTE)
EXTRACT_DATE	DATE
CREATED_BY	VARCHAR2 (250 BYTE)
CREATED_ON	DATE
UPDATE_BY	VARCHAR2 (250 BYTE)
UPDATED_ON	DATE
FLOG_ID	NUMBER
NPI	VARCHAR2 (20 BYTE)
PROV_NAME_TYPE	VARCHAR2 (11 BYTE)
TAXONOMY1	VARCHAR2 (10 BYTE)
TAXONOMY2	VARCHAR2 (10 BYTE)
TAXONOMY3	VARCHAR2 (10 BYTE)
TAXONOMY4	VARCHAR2 (10 BYTE)
TAX_ID_INDICATOR	VARCHAR2 (19 BYTE)
CLIA_ID	VARCHAR2 (19 BYTE)
ACCEPTING_NEW_PAT	VARCHAR2 (11 BYTE)
DOB	DATE
DOB	DATE
FACILITY_GROUP_NO_CODE	VARCHAR2 (40 BYTE)
LICENCE_ENTITY	VARCHAR2 (50 BYTE)
LICENCE_TYPE	VARCHAR2 (19 BYTE)
PROV_ORA	VARCHAR2 (50 BYTE)
SEX	VARCHAR2 (11 BYTE)
CREDENTIAL_EXP_DATE	DATE
CREDENTIAL_EXP_DATE	DATE
CONTRACT_EFF_DATE	DATE
CONTRACT_TERM_DATE	DATE





### 9.3 Daily Provider Enrollment

GTC_ASES_ASES_NETWORKS_HIST	
P * ID	NUMBER
CARRIER	VARCHAR2 (2 BYTE)
TYPE	VARCHAR2 (20 BYTE)
EXTRACT_MONTH	DATE
REGION	VARCHAR2 (1 BYTE)
PMG	VARCHAR2 (4 BYTE)
PMG_NAME	VARCHAR2 (80 BYTE)
NPI	VARCHAR2 (10 BYTE)
DUPLICATE_ENTRY	VARCHAR2 (1 BYTE)
ASSIGNED_LIVES	VARCHAR2 (4 BYTE)
CREDENTIAL	VARCHAR2 (3 BYTE)
CREDENTIAL_EFF_DATE	DATE
CREDENTIAL_EXP_DATE	DATE
PROV_SSN	VARCHAR2 (20 BYTE)
PROV_ID	VARCHAR2 (20 BYTE)
CCN	VARCHAR2 (20 BYTE)
CONTRACT_EFF_DATE	DATE
SPECIALTY	VARCHAR2 (40 BYTE)
SPECIALTY_CODE	VARCHAR2 (2 BYTE)
NAME	VARCHAR2 (80 BYTE)
LAST_NAME1	VARCHAR2 (30 BYTE)
LAST_NAME2	VARCHAR2 (30 BYTE)
FIRST_NAME	VARCHAR2 (80 BYTE)
MI	VARCHAR2 (30 BYTE)
ADDR1	VARCHAR2 (45 BYTE)
ADDR2	VARCHAR2 (45 BYTE)
CITY	VARCHAR2 (45 BYTE)
ZIP	VARCHAR2 (9 BYTE)
PHONE	VARCHAR2 (20 BYTE)
FAX	VARCHAR2 (20 BYTE)
SUNDAY	VARCHAR2 (20 BYTE)
MONDAY	VARCHAR2 (20 BYTE)
TUESDAY	VARCHAR2 (20 BYTE)
WEDNESDAY	VARCHAR2 (20 BYTE)
THURSDAY	VARCHAR2 (20 BYTE)
FRIDAY	VARCHAR2 (20 BYTE)
SATURDAY	VARCHAR2 (20 BYTE)
NCPDP_ID	VARCHAR2 (10 BYTE)
STATE	VARCHAR2 (45 BYTE)
LICENSE_NUM	VARCHAR2 (10 BYTE)
CONTACT_PERSON	VARCHAR2 (80 BYTE)
CREATED_BY	VARCHAR2 (100 BYTE)
CREATED_ON	DATE
UPDATE_BY	VARCHAR2 (100 BYTE)
UPDATED_ON	DATE
FLOG_ID	NUMBER
CONTRACT_TERM_DATE	DATE

[ASES\\_NETWORKS\\_HIST\\_PK1 \(ID\)](#)  
[ASES\\_NETWORKS\\_HIST\\_PK1 \(ID\)](#)  
[NETWORKS\\_HIST\\_CA\\_IDX \(CARRIER\)](#)  
[NETWORKS\\_HIST\\_EM\\_IDX \(EXTRACT\\_MONTH\)](#)  
[NETWORKS\\_HIST\\_NPI\\_IDX \(NPI\)](#)  
[NETWORKS\\_HIST\\_NPI\\_PL\\_CA\\_IDX \(NPI, PROV\\_ID, CARRIER\)](#)  
[NETWORKS\\_HIST\\_PL\\_IDX \(PROV\\_ID\)](#)  
[NETWORKS\\_HIST\\_PMG\\_IDX \(PMG\)](#)  
[NET\\_FLOGID\\_IDX1 \(FLOG\\_ID\)](#)

GTC_ASES_ASES_PROVIDER_HIST	
P * ID	NUMBER
PROV_CARRIER	VARCHAR2 (2 BYTE)
PROV_ID	VARCHAR2 (20 BYTE)
PROV_LNAME	VARCHAR2 (100 BYTE)
PROV_FNAME	VARCHAR2 (100 BYTE)
PROV_MNAME	VARCHAR2 (100 BYTE)
PROV_ADDR1	VARCHAR2 (100 BYTE)
PROV_ADDR2	VARCHAR2 (100 BYTE)
PROV_ADDR3	VARCHAR2 (100 BYTE)
PROV_CITY	VARCHAR2 (45 BYTE)
PROV_STATE	VARCHAR2 (45 BYTE)
PROV_ZIP	VARCHAR2 (9 BYTE)
PROV_COUNTRY	VARCHAR2 (45 BYTE)
PROV_TEL	VARCHAR2 (50 BYTE)
PROV_EXT	VARCHAR2 (20 BYTE)
PROV_EMAIL	VARCHAR2 (40 BYTE)
PROV_CONTACT	VARCHAR2 (50 BYTE)
PROV_TYPE	VARCHAR2 (50 BYTE)
SPEC1	VARCHAR2 (20 BYTE)
SPEC2	VARCHAR2 (20 BYTE)
SPEC3	VARCHAR2 (20 BYTE)
SPEC4	VARCHAR2 (20 BYTE)
NETWORK_SPECIALIST	VARCHAR2 (1 BYTE)
FEDERAL_TAX_ID	VARCHAR2 (20 BYTE)
LICENCE_NUMBER	VARCHAR2 (15 BYTE)
UPIN	VARCHAR2 (15 BYTE)
DEA_NUMBER	VARCHAR2 (20 BYTE)
MEDICARE_NUMBER	VARCHAR2 (20 BYTE)
MEDICAID_NUMBER	VARCHAR2 (20 BYTE)
EXTRACT_DATE	DATE
CREATED_BY	VARCHAR2 (250 BYTE)
CREATED_ON	DATE
UPDATE_BY	VARCHAR2 (250 BYTE)
UPDATED_ON	DATE
FLOG_ID	NUMBER
NPI	VARCHAR2 (20 BYTE)
PROV_NAME_TYPE	VARCHAR2 (1 BYTE)
TAXONOMY1	VARCHAR2 (10 BYTE)
TAXONOMY2	VARCHAR2 (10 BYTE)
TAXONOMY3	VARCHAR2 (10 BYTE)
TAXONOMY4	VARCHAR2 (10 BYTE)
TAX_ID_INDICATOR	VARCHAR2 (3 BYTE)
CLIA_ID	VARCHAR2 (10 BYTE)
ACCEPTING_NEW_PAT	VARCHAR2 (1 BYTE)
DOB	DATE
DOD	DATE
FACILITY_GROUP_IND_CODE	VARCHAR2 (2 BYTE)
LICENSE_ENTYTY	VARCHAR2 (50 BYTE)
LICENSE_TYPE	VARCHAR2 (1 BYTE)
PROV_DBA	VARCHAR2 (50 BYTE)
SEX	VARCHAR2 (1 BYTE)
CREDENTIAL_EFF_DATE	DATE
CREDENTIAL_EXP_DATE	DATE
CONTRACT_EFF_DATE	DATE
CONTRACT_TERM_DATE	DATE

[ASES\\_PROVIDERS\\_HIST\\_PK1 \(ID\)](#)  
[ASES\\_PROVIDERS\\_HIST\\_PK1 \(ID\)](#)  
[ASES\\_PROVIDER\\_EXTR\\_IDX1 \(PROV\\_CARRIER, TO\\_CHAR\('EXTRACT\\_DATE','YYYY-MM'\)\)](#)  
[PROVIDER\\_HIST\\_ED\\_IDX \(EXTRACT\\_DATE\)](#)  
[PROVIDER\\_HIST\\_NPI\\_IDX \(NPI\)](#)  
[PROVIDER\\_HIST\\_NPI\\_PL\\_PC\\_IDX \(NPI, PROV\\_ID, PROV\\_CARRIER\)](#)  
[PROVIDER\\_HIST\\_PC\\_IDX \(PROV\\_CARRIER\)](#)  
[PROVIDER\\_HIST\\_PL\\_IDX \(PROV\\_ID\)](#)  
[PROV\\_FED\\_TAX\\_IDX1 \(FEDERAL\\_TAX\\_ID\)](#)  
[PROV\\_VW\\_IDX1 \(PROV\\_CARRIER, NPI, EXTRACT\\_DATE\)](#)  
[PRV\\_CRR\\_PRV\\_IDX1 \(PROV\\_CARRIER, PROV\\_ID\)](#)  
[PRV\\_FLOGID\\_IDX1 \(FLOG\\_ID\)](#)  
[PRV\\_PROVID\\_CARR\\_IDX1 \(PROV\\_ID\)](#)

GTC_ASES_ASES_PMG	
P * IPA	VARCHAR2 (4 BYTE)
CARRIER_ID	VARCHAR2 (2 BYTE)
IPA_DESC	VARCHAR2 (80 BYTE)
IPA_ADDR1	VARCHAR2 (45 BYTE)
IPA_ADDR2	VARCHAR2 (45 BYTE)
IPA_ADDR3	VARCHAR2 (45 BYTE)
IPA_CITY	VARCHAR2 (45 BYTE)
IPA_STATE	VARCHAR2 (45 BYTE)
IPA_ZIP	VARCHAR2 (9 BYTE)
IPA_COUNTRY	VARCHAR2 (45 BYTE)
IPA_HOME_PHONE	VARCHAR2 (20 BYTE)
IPA_WORK_PHONE	VARCHAR2 (20 BYTE)
IPA_EXT	VARCHAR2 (20 BYTE)
FEDERAL_TAX_ID	VARCHAR2 (20 BYTE)
CREATED_BY	VARCHAR2 (250 BYTE)
CREATED_ON	DATE
UPDATE_BY	VARCHAR2 (250 BYTE)
UPDATED_ON	DATE
EXTRACT_DATE	DATE

[ASES\\_PMG\\_PK \(IPA, CARRIER\\_ID\)](#)  
[ASES\\_PMG\\_PK \(IPA, CARRIER\\_ID\)](#)

GTC_ASES_ASES_PROVIDERS	
P * ID	NUMBER
NPI	VARCHAR2 (80 BYTE)
SPECIALTY	VARCHAR2 (80 BYTE)
SPEC1	VARCHAR2 (80 BYTE)
SPEC2	VARCHAR2 (80 BYTE)
SPEC3	VARCHAR2 (80 BYTE)
SPEC4	VARCHAR2 (80 BYTE)
PROV_FULLNAME	VARCHAR2 (400 BYTE)
PROV_LNAME1	VARCHAR2 (80 BYTE)
PROV_LNAME2	VARCHAR2 (80 BYTE)
PROV_FNAME	VARCHAR2 (80 BYTE)
PROV_MNAME	VARCHAR2 (80 BYTE)
PROV_TYPE	VARCHAR2 (80 BYTE)
PROV_ADDR1	VARCHAR2 (80 BYTE)
PROV_ADDR2	VARCHAR2 (80 BYTE)
PROV_ADDR3	VARCHAR2 (80 BYTE)
PROV_CITY	VARCHAR2 (80 BYTE)
PROV_STATE	VARCHAR2 (45 BYTE)
PROV_ZIP	VARCHAR2 (80 BYTE)
PROV_TEL	VARCHAR2 (80 BYTE)
FAX	VARCHAR2 (80 BYTE)
EXTRACT_DATE	DATE
CREATED_BY	VARCHAR2 (250 BYTE)
CREATED_ON	DATE
UPDATE_BY	VARCHAR2 (250 BYTE)
UPDATED_ON	DATE
CLM_PROV_TYPE	VARCHAR2 (4 BYTE)
PROV_SPEC	VARCHAR2 (80 BYTE)
PROV_MIN_CLM_CNT	NUMBER
TAXONOMY_CODE	VARCHAR2 (20 BYTE)
ENTITY_TYPE	VARCHAR2 (10 BYTE)
CLAIM_CNT	NUMBER
CMS_SPECIALTY_CODE	VARCHAR2 (20 BYTE)
TAX_PROV_CLASS	VARCHAR2 (100 BYTE)
TAX_PROV_SPEC	VARCHAR2 (100 BYTE)
NPI_DEACTIVATION_DATE	DATE
STATUS	VARCHAR2 (2000 BYTE)
ACTIVE	NUMBER
PROV_NAME_TYPE	VARCHAR2 (1 BYTE)
FACILITY_GROUP_IND_CODE	VARCHAR2 (2 BYTE)

[ASES\\_PROVIDERS\\_PK \(ID\)](#)  
[ASES\\_PROVIDERS\\_PK \(ID\)](#)  
[ASES\\_PROV\\_NPI\\_IDX \(NPI\)](#)  
[ASES\\_PROV\\_SPEC\\_IDX \(PROV\\_SPEC\)](#)



## 9.4 Daily Provider Group Linking

GTC_ASES.ASES_PROVIDER_HIST	
P * ID	NUMBER
PROV_CARRIER	VARCHAR2 (2 BYTE)
PROV_ID	VARCHAR2 (20 BYTE)
PROV_LNAME	VARCHAR2 (100 BYTE)
PROV_FNAME	VARCHAR2 (100 BYTE)
PROV_MNAME	VARCHAR2 (100 BYTE)
PROV_ADDR1	VARCHAR2 (100 BYTE)
PROV_ADDR2	VARCHAR2 (100 BYTE)
PROV_ADDR3	VARCHAR2 (100 BYTE)
PROV_CITY	VARCHAR2 (45 BYTE)
PROV_STATE	VARCHAR2 (45 BYTE)
PROV_ZIP	VARCHAR2 (9 BYTE)
PROV_COUNTRY	VARCHAR2 (45 BYTE)
PROV_TEL	VARCHAR2 (50 BYTE)
PROV_EXT	VARCHAR2 (20 BYTE)
PROV_EMAIL	VARCHAR2 (40 BYTE)
PROV_CONTACT	VARCHAR2 (50 BYTE)
PROV_TYPE	VARCHAR2 (50 BYTE)
SPEC1	VARCHAR2 (20 BYTE)
SPEC2	VARCHAR2 (20 BYTE)
SPEC3	VARCHAR2 (20 BYTE)
SPEC4	VARCHAR2 (20 BYTE)
NETWORK_SPECIALIST	VARCHAR2 (1 BYTE)
FEDERAL_TAX_ID	VARCHAR2 (20 BYTE)
LICENCE_NUMBER	VARCHAR2 (15 BYTE)
UPIN	VARCHAR2 (15 BYTE)
DEA_NUMBER	VARCHAR2 (20 BYTE)
MEDICARE_NUMBER	VARCHAR2 (20 BYTE)
MEDICAID_NUMBER	VARCHAR2 (20 BYTE)
EXTRACT_DATE	DATE
CREATED_BY	VARCHAR2 (250 BYTE)
CREATED_ON	DATE
UPDATE_BY	VARCHAR2 (250 BYTE)
UPDATED_ON	DATE
FLOG_ID	NUMBER
NPI	VARCHAR2 (20 BYTE)
PROV_NAME_TYPE	VARCHAR2 (1 BYTE)
TAXONOMY1	VARCHAR2 (10 BYTE)
TAXONOMY2	VARCHAR2 (10 BYTE)
TAXONOMY3	VARCHAR2 (10 BYTE)
TAXONOMY4	VARCHAR2 (10 BYTE)
TAX_ID_INDICATOR	VARCHAR2 (3 BYTE)
CLIA_ID	VARCHAR2 (10 BYTE)
ACCEPTING_NEW_PAT	VARCHAR2 (1 BYTE)
DOB	DATE
DOD	DATE
FACILITY_GROUP_IND_CODE	VARCHAR2 (2 BYTE)
LICENSE_ENTITY	VARCHAR2 (50 BYTE)
LICENSE_TYPE	VARCHAR2 (1 BYTE)
PROV_DBA	VARCHAR2 (50 BYTE)
SEX	VARCHAR2 (1 BYTE)
CREDENTIAL_EFF_DATE	DATE
CREDENTIAL_EXP_DATE	DATE
CONTRACT_EFF_DATE	DATE
CONTRACT_TERM_DATE	DATE
<b>ASES_PROVIDERS_HIST_PK1 (ID)</b> ◆ ASES_PROVIDERS_HIST_PK1 (ID) ◆ ASES_PROVIDER_EXTR_IDX1 (PROV_CARRIER, TO_CHAR('EXTRACT_DATE','YYYY-MM')) ◆ PROVIDER_HIST_ED_IDX (EXTRACT_DATE) ◆ PROVIDER_HIST_NPI_IDX (NPI) ◆ PROVIDER_HIST_NPI_PL_PC_IDX (NPI, PROV_ID, PROV_CARRIER) ◆ PROVIDER_HIST_PC_IDX (PROV_CARRIER) ◆ PROVIDER_HIST_PL_IDX (PROV_ID) ◆ PROV_FED_TAX_IDX1 (FEDERAL_TAX_ID) ◆ PROV_WW_IDX1 (PROV_CARRIER, NPI, EXTRACT_DATE) ◆ PRV_CRR_PRV_IDX1 (PROV_CARRIER, PROV_ID) ◆ PRV_FLOGID_IDX1 (FLOG_ID) ◆ PRV_PROVID_CARR_IDX1 (PROV_ID)	

GTC_ASES.ASES_NETWORKS_HIST	
P * ID	NUMBER
CARRIER	VARCHAR2 (2 BYTE)
TYPE	VARCHAR2 (20 BYTE)
EXTRACT_MONTH	DATE
REGION	VARCHAR2 (1 BYTE)
PMG	VARCHAR2 (4 BYTE)
PMG_NAME	VARCHAR2 (80 BYTE)
NPI	VARCHAR2 (10 BYTE)
DUPLICATE_ENTRY	VARCHAR2 (1 BYTE)
ASSIGNED_LIVES	VARCHAR2 (4 BYTE)
CREDENTIAL	VARCHAR2 (3 BYTE)
CREDENTIAL_EFF_DATE	DATE
CREDENTIAL_EXP_DATE	DATE
PROV_SSN	VARCHAR2 (20 BYTE)
PROV_ID	VARCHAR2 (20 BYTE)
CCN	VARCHAR2 (20 BYTE)
CONTRACT_EFF_DATE	DATE
SPECIALTY	VARCHAR2 (40 BYTE)
SPECIALTY_CODE	VARCHAR2 (2 BYTE)
NAME	VARCHAR2 (80 BYTE)
LAST_NAME1	VARCHAR2 (30 BYTE)
LAST_NAME2	VARCHAR2 (30 BYTE)
FIRST_NAME	VARCHAR2 (50 BYTE)
MI	VARCHAR2 (30 BYTE)
ADDR1	VARCHAR2 (45 BYTE)
ADDR2	VARCHAR2 (45 BYTE)
CITY	VARCHAR2 (45 BYTE)
ZIP	VARCHAR2 (9 BYTE)
PHONE	VARCHAR2 (20 BYTE)
FAX	VARCHAR2 (20 BYTE)
SUNDAY	VARCHAR2 (20 BYTE)
MONDAY	VARCHAR2 (20 BYTE)
TUESDAY	VARCHAR2 (20 BYTE)
WEDNESDAY	VARCHAR2 (20 BYTE)
THURSDAY	VARCHAR2 (20 BYTE)
FRIDAY	VARCHAR2 (20 BYTE)
SATURDAY	VARCHAR2 (20 BYTE)
NCPPD_ID	VARCHAR2 (10 BYTE)
STATE	VARCHAR2 (45 BYTE)
LICENSE_NUM	VARCHAR2 (10 BYTE)
CONTACT_PERSON	VARCHAR2 (80 BYTE)
CREATED_BY	VARCHAR2 (100 BYTE)
CREATED_ON	DATE
UPDATE_BY	VARCHAR2 (100 BYTE)
UPDATED_ON	DATE
FLOG_ID	NUMBER
CONTRACT_TERM_DATE	DATE
<b>ASES_NETWORKS_HIST_PK1 (ID)</b> ◆ ASES_NETWORKS_HIST_PK1 (ID) ◆ NETWORKS_HIST_CA_IDX (CARRIER) ◆ NETWORKS_HIST_EM_IDX (EXTRACT_MONTH) ◆ NETWORKS_HIST_NPI_IDX (NPI) ◆ NETWORKS_HIST_NPI_PL_CA_IDX (NPI, PROV_ID, CARRIER) ◆ NETWORKS_HIST_PL_IDX (PROV_ID) ◆ NETWORKS_HIST_PMG_IDX (PMG) ◆ NET_FLOGID_IDX1 (FLOG_ID)	

GTC_ASES.ASES_IPA_HIST	
P * ID	NUMBER
CARRIER_ID	VARCHAR2 (2 BYTE)
IPA	VARCHAR2 (4 BYTE)
IPA_DESC	VARCHAR2 (80 BYTE)
IPA_ADDR1	VARCHAR2 (45 BYTE)
IPA_ADDR2	VARCHAR2 (45 BYTE)
IPA_ADDR3	VARCHAR2 (45 BYTE)
IPA_CITY	VARCHAR2 (45 BYTE)
IPA_STATE	VARCHAR2 (45 BYTE)
IPA_ZIP	VARCHAR2 (9 BYTE)
IPA_COUNTRY	VARCHAR2 (45 BYTE)
IPA_HOME_PHONE	VARCHAR2 (20 BYTE)
IPA_WORK_PHONE	VARCHAR2 (20 BYTE)
IPA_EXT	VARCHAR2 (20 BYTE)
FEDERAL_TAX_ID	VARCHAR2 (20 BYTE)
EXTRACT_DATE	DATE
CREATED_BY	VARCHAR2 (250 BYTE)
CREATED_ON	DATE
UPDATE_BY	VARCHAR2 (250 BYTE)
UPDATED_ON	DATE
FLOG_ID	NUMBER
IPA_NPI	VARCHAR2 (10 BYTE)
IPA_ADM_LNAME	VARCHAR2 (50 BYTE)
IPA_ADM_FNAME	VARCHAR2 (30 BYTE)
PROV_MNAME	VARCHAR2 (30 BYTE)
<b>ASES_IPA_PK_1 (ID)</b> ◆ ASES_IPA_PK_1 (ID) ◆ IPA_FLOGID_IDX_1 (FLOG_ID) ◆ IPA_HIST_ED_IDX (EXTRACT_DATE) ◆ IPA_HIST_IPA_IDX (IPA)	



## 9.5 Monthly Capitation Payments

GTC_ASES.ASES_PREM_PAY	
P * ID	NUMBER (20)
MEM_MPI	VARCHAR2 (13 BYTE)
MEM_SSN	VARCHAR2 (9 BYTE)
PREMIUM_DATE	DATE
ACCOUNTING_DATE	DATE
FAM_ID	VARCHAR2 (11 BYTE)
FAM_MEM_SUFFIX	VARCHAR2 (2 BYTE)
PRORATE_DAYS	NUMBER (10)
PREMIUM	NUMBER (18,2)
PREMIUM_MBHO	NUMBER (18,2)
FEE	NUMBER (18,2)
ADJUST_PAYMENT_ID	NUMBER (10)
SPECIAL_ENROLL	VARCHAR2 (1 BYTE)
CARRIER	VARCHAR2 (2 BYTE)
MEM_PRIMARY_CENTER	VARCHAR2 (4 BYTE)
PMG	VARCHAR2 (5 BYTE)
REGION	VARCHAR2 (1 BYTE)
REGION_CODE	VARCHAR2 (1 BYTE)
MUNICIPALITY	VARCHAR2 (4 BYTE)
PLAN_TYPE	VARCHAR2 (2 BYTE)
PLAN_VERSION	VARCHAR2 (3 BYTE)
LAST_NAME_1	VARCHAR2 (50 BYTE)
MEM_UPDATE_DATE	DATE
MEM_CERTIFICATION_DATE	DATE
STATUS	VARCHAR2 (50 BYTE)
UPDATE_USER	VARCHAR2 (10 BYTE)
OVERPAY_PERCENT	NUMBER (18,8)
ADJUST_CAT	VARCHAR2 (15 BYTE)
MEM_PERCENT	NUMBER (18,8)
RECON_STAT	VARCHAR2 (15 BYTE)
MEM_SSN_ORIGINAL	VARCHAR2 (9 BYTE)
CARRIER_EFF_DATE	DATE
MEMBERS_ELIGIBLE	VARCHAR2 (10 BYTE)
CARD_ISSUE_DATE	DATE
NUMBER_OF_CARDS	VARCHAR2 (10 BYTE)
ADJUST_TYPE	VARCHAR2 (15 BYTE)
ERROR_MESSAGE	VARCHAR2 (40 BYTE)
MEMBER_ID	NUMBER (10)
TYPE_BILLING_RUN	VARCHAR2 (13 BYTE)
MENTAL_CARRIER	VARCHAR2 (10 BYTE)
OLD_PAYMENT_ID	NUMBER
RUN_PROCESS_DATE	DATE
INELIGIBLE_N_R	VARCHAR2 (10 BYTE)
ADJUST_CARRIER	VARCHAR2 (2 BYTE)
ADJUST_BILL_DATE	DATE
REPORTING_GROUP	VARCHAR2 (1 BYTE)
STATUS_REF	VARCHAR2 (50 BYTE)
CREATED_BY	VARCHAR2 (250 BYTE)
CREATED_ON	DATE
UPDATE_BY	VARCHAR2 (250 BYTE)
UPDATED_ON	DATE
PAYMENT_ID	NUMBER
MEDICAID_IND	VARCHAR2 (1 BYTE)
TLOG_ID	NUMBER
RATE_CELL	VARCHAR2 (2 BYTE)
GROUP_CODE	VARCHAR2 (3 BYTE)
MIP_RATE_CELL	VARCHAR2 (3 BYTE)
<ul style="list-style-type: none"> <li>▶ ASES_PREM_PAY_PK-01 (ID)</li> <li>▶ ASES_PREM_PAY_FIXED_IDX-01 (CARRIER, REGION, FAM_ID, ACCOUNTING_DATE, FAM_MEM_SUFFIX, ADJUST_TYPE)</li> <li>▶ ASES_PREM_PAY_IDX-01 (ADJUST_PAYMENT_ID)</li> <li>▶ ASES_PREM_PAY_IDX_GEN_ADJ-01 (ADJUST_TYPE, MEM_MPI, ACCOUNTING_DATE)</li> <li>▶ ASES_PREM_PAY_MPMONTH_IDX_ARC-01 (MEM_MPI, TO_CHAR('ACCOUNTING_DATE','yyyy-mm'))</li> <li>▶ ASES_PREM_PAY_MPI_ACC_DATE_IDX-01 (MEM_MPI, ACCOUNTING_DATE)</li> <li>▶ ASES_PREM_PAY_PK-01 (ID)</li> <li>▶ ASES_PREM_PAY_POPULATION_IDX-01 (ACCOUNTING_DATE, ADJUST_TYPE, REGION, PLAN_TYPE, MEDICAID_IND)</li> <li>▶ IDX\$\$_6D78001-01 (PREMIUM_DATE, CARRIER, REGION_CODE)</li> <li>▶ IDX_PREM_PAY_PD_UU_RG-01 (PREMIUM_DATE, UPDATE_USER, REGION_CODE)</li> <li>▶ PP_ACCTDT_CARRIER_MPL_IDX-01 (ACCOUNTING_DATE, CARRIER, MEM_MPI)</li> <li>▶ PP_ADJBILLDT_ADJUSTYPE_IDX-01 (ADJUST_TYPE, ADJUST_BILL_DATE)</li> <li>▶ PP_CARRID_ACDT_IDX-01 (CARRIER, ACCOUNTING_DATE)</li> <li>▶ PP_CARR_REG_FAM_ACTD_SUF_IDX-01 (CARRIER, REGION, FAM_ID, ACCOUNTING_DATE, FAM_MEM_SUFFIX)</li> <li>▶ PP_ONETIME_UPD-01 (TRUNC('CREATED_ON'), CARRIER, REGION, REGION_CODE)</li> <li>▶ PP_PAYID_REG_IDX-01 (PAYMENT_ID, REGION_CODE)</li> <li>▶ PP_PREMDT_IDX-01 (PREMIUM_DATE)</li> <li>▶ PP_REG_CAR_ACCDT_PMG_IDX-01 (MEM_MPI, ADJUST_TYPE, REGION, CARRIER, ACCOUNTING_DATE, PMG)</li> <li>▶ PP_TGUPDONCRTON_CAR_REG_IDX-01 (TRUNC(GREATEST(NVL('UPDATED_ON','TO_DATE(' 1900-01-01 00:00:00', 'yyyy-mm-dd hh24:mi:ss')),'CREATED_ON')), CARRIER, REGION_CODE)</li> <li>▶ PP_TLOG_ID-01 (TLOG_ID)</li> <li>▶ PP_TRUNCACCDT-01 (TRUNC('ACCOUNTING_DATE'))</li> <li>▶ PP_TRUNC_RUNDT-01 (TRUNC('RUN_PROCESS_DATE'))</li> <li>▶ PREMPAY_MPI_PREMDATE_IDX_ARC-01 (MEM_MPI, PREMIUM_DATE, ADJUST_TYPE, UPDATE_USER)</li> <li>▶ PREM_PAY_ACC_DT_IDX-01 (ACCOUNTING_DATE)</li> <li>▶ PREM_PAY_IDX_CARRIER-01 (CARRIER)</li> <li>▶ PREM_PAY_MEM_SSN_IDX-01 (MEM_SSN)</li> <li>▶ PREP_PAY_MPI_IDX-01 (MEM_MPI)</li> <li>▶ REGION_IDX-01 (MEM_MPI, ID)</li> <li>▶ W_PREM_PAY_F_IDX-01 (MEM_MPI, ACCOUNTING_DATE, CARRIER, REGION, PLAN_TYPE, PLAN_VERSION)</li> </ul>	





## 9.6 Monthly MCO Payments

GTC_ASES.ASES_CAPITATION_HIST	
P * ID	NUMBER
CARRIER_ID	VARCHAR2 (2 BYTE)
CAP_ID	VARCHAR2 (20 BYTE)
CAP_TYPE	VARCHAR2 (2 BYTE)
CAP_DATE	DATE
EXPR_DATE	DATE
PROV_IN	VARCHAR2 (20 BYTE)
IPA	VARCHAR2 (10 BYTE)
REGION_CODE	VARCHAR2 (1 BYTE)
MUNICIPALITY_CODE	VARCHAR2 (4 BYTE)
MEMBER_SSN	NUMBER (9)
FAMILY_ID	VARCHAR2 (11 BYTE)
MEMBER_SUFFIX	VARCHAR2 (2 BYTE)
CAP_AMT	NUMBER (9,2)
EXTRACT_DATE	DATE
MPI	VARCHAR2 (13 BYTE)
CREATED_BY	VARCHAR2 (250 BYTE)
CREATED_ON	DATE
UPDATE_BY	VARCHAR2 (250 BYTE)
UPDATED_ON	DATE
FLOG_ID	NUMBER
PLAN_TYPE	VARCHAR2 (2 BYTE)
PLAN_VERSION	VARCHAR2 (3 BYTE)
MEDICAID_IND	VARCHAR2 (1 BYTE)
STATUS	VARCHAR2 (50 BYTE)
STATUS_REF	VARCHAR2 (50 BYTE)
ADJUST_CAT	VARCHAR2 (15 BYTE)
AGE	NUMBER (3)
GENDER_CODE	VARCHAR2 (1 BYTE)
TIER_CODE	VARCHAR2 (2 BYTE)
DAYS_ENROLMENT	NUMBER (2)
PCP_ADMIN	NUMBER (9,4)
OBGYN	NUMBER (9,4)
PCP_IN_HOSP	NUMBER (9,4)
MED_TARIFF	NUMBER (9,4)
MED_PAID_AMOUNT	NUMBER (9,2)
INST_TARIFF	NUMBER (9,4)
INST_PAID_AMOUNT	NUMBER (9,2)
YEAR_MONTH	VARCHAR2 (7 BYTE)
MUNICIPALITY	VARCHAR2 (3 BYTE)
MEM_PERCENT	NUMBER (18,8)
PCP_NPI_IN	VARCHAR2 (10 BYTE)
GROSS_CAP_AMT	VARCHAR2 (10 BYTE)
NET_CAP_AMT	VARCHAR2 (10 BYTE)
RISK_TYPE	VARCHAR2 (3 BYTE)
TIER	VARCHAR2 (4 BYTE)
DAYS	VARCHAR2 (2 BYTE)
MPL_IN	VARCHAR2 (13 BYTE)
PROV	VARCHAR2 (20 BYTE)
PCP_NPI	VARCHAR2 (10 BYTE)
FEDERAL_TAX_ID	VARCHAR2 (20 BYTE)
<p>ASES_CAPITATION_IL_PK1 (ID)</p> <ul style="list-style-type: none"> <li>◆ ASES_CAPITATION_HIST_IL_IDX02 (CARRIER_ID, CAP_ID)</li> <li>◆ ASES_CAPITATION_HIST_IL_IDX04 (CAP_DATE, IPA)</li> <li>◆ ASES_CAPITATION_IL_IDX02 (CAP_DATE, MPI)</li> <li>◆ ASES_CAPITATION_IL_MPL_IDX_ARC01 (MPI)</li> <li>◆ ASES_CAPITATION_IL_PK1 (ID)</li> <li>◆ ASES_CAPITATION_PMG_IDX_IL_ARC01 (CARRIER_ID, IPA)</li> <li>◆ ASES_CAP_EXPRDT_MPL_IL_IDX01 (TRUNC("EXPR_DATE",'fmmm'), MPI)</li> <li>◆ ASES_CAP_EXPR_DATE_IDX_IL_ARC01 (EXPR_DATE)</li> <li>◆ ASES_CAP_MPL_EXPR_IDX_IL_ARC01 (CARRIER_ID, EXPR_DATE, MPI)</li> <li>◆ ASES_CARRID_EXDT_IL_IDX01 (CARRIER_ID, EXPR_DATE)</li> <li>◆ CAPH_TEXPRDT_CAR_REG_IL_IDX01 (TRUNC("EXPR_DATE",'fmmm'), CARRIER_ID, REGION_CODE)</li> <li>◆ CAP_FLOGID_IL_IDX01 (FLOG_ID)</li> <li>◆ TGUPDONCRTON_CAR_REG_IL_IDX01 (TRUNC(GREATEST(NVL("UPDATED_ON",TO_DATE(' 1900-01-01 00:00:00','yyyy-mm-dd hh24:mi:ss')),"CREATED_ON")), CARRIER_ID, REGION_CODE)</li> </ul>	



## 9.7 Monthly Member Reconciliation

GTC_ASES_ASES_MEM_ELIG_HIST	
P ID	NUMBER (20)
MEM_MPI	VARCHAR2 (11 BYTE)
FAM_ID	VARCHAR2 (11 BYTE)
FAM_MEM_SUFFIX	VARCHAR2 (2 BYTE)
CARRIER	VARCHAR2 (2 BYTE)
ELIGIBILITY_IND	VARCHAR2 (1 BYTE)
MEM_CERTIFICATION_DATE	DATE
SPECIAL_ENROLL	VARCHAR2 (1 BYTE)
CARRIER_EFF_DATE	DATE
REGION	VARCHAR2 (1 BYTE)
REGION_CODE	VARCHAR2 (11 BYTE)
MUNICIPALITY	VARCHAR2 (4 BYTE)
BIRTH_DATE	DATE
SEX	VARCHAR2 (1 BYTE)
UPDATE_DATE	DATE
UPDATE_USER	VARCHAR2 (8 BYTE)
MEDICARE_IND	VARCHAR2 (1 BYTE)
NEW_PLAN_TYPE	VARCHAR2 (2 BYTE)
NEW_PLAN_TYPE_EFF_DATE	DATE
PLAN_VERSION	VARCHAR2 (3 BYTE)
PLAN_VERSION_EFF_DATE	DATE
CONTRACT_NUMBER	VARCHAR2 (13 BYTE)
COVERAGE_CODE	VARCHAR2 (3 BYTE)
MEM_PRIMARY_CENTER	VARCHAR2 (4 BYTE)
MEM_PRIMARY_CENTER_EFFDATE	DATE
PCP1	VARCHAR2 (15 BYTE)
PCP1_EFF_DATE	DATE
PCP2	VARCHAR2 (15 BYTE)
PCP2_EFF_DATE	DATE
CARD_ID_NUMBER	VARCHAR2 (15 BYTE)
CARD_ID_DATE	DATE
ELA_INDICATOR	VARCHAR2 (1 BYTE)
PRIMARY_CENTER_PCP_CHG_RSN	VARCHAR2 (2 BYTE)
MEDICAD_IND	VARCHAR2 (1 BYTE)
GROUP_ID	VARCHAR2 (10 BYTE)
RELATIONSHIP	VARCHAR2 (11 BYTE)
NEW_CARRIER	VARCHAR2 (2 BYTE)
NEW_CARRIER_EFF_DATE	DATE
BIRTH_PLACE	VARCHAR2 (11 BYTE)
MARITAL_STATUS	VARCHAR2 (11 BYTE)
EDUCATION_LEVEL	VARCHAR2 (11 BYTE)
PREGNANCY_IND	VARCHAR2 (11 BYTE)
DENIAL_CODE	VARCHAR2 (2 BYTE)
AGENCY	VARCHAR2 (5 BYTE)
NEW_PCP1	VARCHAR2 (15 BYTE)
NEW_PCP1_EFF_DATE	DATE
NEW_PCP2	VARCHAR2 (15 BYTE)
NEW_PCP2_EFF_DATE	DATE
ELA_ERRORS	VARCHAR2 (10 BYTE)
NEW_MEM_PRIMARY_CENTER	VARCHAR2 (4 BYTE)
NEWMEMPRMRYCENTREFFDATE	DATE
PREV_MEM_ID	VARCHAR2 (11 BYTE)
PLAN_TYPE	VARCHAR2 (2 BYTE)
PLAN_TYPE_EFF_DATE	DATE
NEW_PLAN_VERSION	VARCHAR2 (3 BYTE)
NEW_PLAN_VERSION_EFF_DATE	DATE
INSTITUTIONAL_STATUS	VARCHAR2 (11 BYTE)
HIC_NUMBER	VARCHAR2 (12 BYTE)
AUTO_ENROLL_INDICATOR	VARCHAR2 (1 BYTE)
AUTO_ENROLL_DATE	DATE
IPA_ESPECIAL	VARCHAR2 (11 BYTE)
CMS_CERT_STATUS	VARCHAR2 (2 BYTE)
NEW_CONTRACT_NUMBER	VARCHAR2 (11 BYTE)
MEM_DED_LEVEL	VARCHAR2 (11 BYTE)
MEM_POVERTY_LEVEL	VARCHAR2 (3 BYTE)
MEM_CREDITABLE_INCOME	NUMBER (19,2)
MEM_GROUP_COUNT	NUMBER (18,2)
MEM_SS	VARCHAR2 (9 BYTE)
MEM_SS_ORIGINAL	VARCHAR2 (9 BYTE)
GTC_TYPE	VARCHAR2 (25 BYTE)
MEMBER_ID	NUMBER (10)
CREATED_BY	VARCHAR2 (250 BYTE)
CREATED_ON	DATE
UPDATED_BY	VARCHAR2 (250 BYTE)
UPDATED_ON	DATE
TLOG_ID	NUMBER
TYPE	VARCHAR2 (50 BYTE)
STATUS	VARCHAR2 (50 BYTE)
COVERAGE_DET	VARCHAR2 (50 BYTE)
ENROLL_DET	VARCHAR2 (50 BYTE)
ENROLL_FUT_DET	VARCHAR2 (50 BYTE)
PMG_DET	VARCHAR2 (50 BYTE)
PMG_FUT_DET	VARCHAR2 (50 BYTE)
ENROLL_EFF_DATE	DATE
ENROLL_FUT_EFF_DATE	DATE
PMG_EFF_DATE	DATE
PMG_FUT_EFF_DATE	DATE
ADJUST_TYPE	VARCHAR2 (2 BYTE)
EOE_EFF_DATE	DATE
END_EFF_DATE	DATE
COST_SHARING_FLAG	VARCHAR2 (11 BYTE)
CONTACT_MEMBER	VARCHAR2 (11 BYTE)
MAX_COPY	NUMBER (19,2)
GROUP_CODE	VARCHAR2 (3 BYTE)
EXTENSION_FLAG	VARCHAR2 (10 BYTE)
APP_NUM	VARCHAR2 (11 BYTE)
SPEND_DOWN_FLAG	VARCHAR2 (11 BYTE)
GENDER	VARCHAR2 (11 BYTE)
RATE_CELL_ID	VARCHAR2 (2 BYTE)
PMG_TAX_ID	VARCHAR2 (9 BYTE)
NEW_CARD_ID	VARCHAR2 (9 BYTE)
NEW_CARD_ID_DATE	DATE
➤ ASES_MEM_ELIG_HIST_PK (ID)	
➤ ASES_MEM_ELIG_HIST_IDX_01 (MEM_MPI, UPDATE_DATE, UPDATE_USER, REGION)	
➤ ASES_MEM_ELIG_HIST_IDX_UJ_UJ (UPDATE_USER, UPDATE_DATE)	
➤ ASES_MEM_ELIG_HIST_PK (ID)	
➤ ASES_MEM_ELIG_HIST_TLOG_IDX (TLOG_ID)	
➤ IXDSS_D720001 (MEM_MPI, ADJUST_TYPE)	
➤ MEM_BDAY YYYY_IDX (TO_NUMBER(CHAR('BIRTH_DATE','YYYY')))	
➤ MEM_CARRIER_IDX (CARRIER)	
➤ MEM_FAM_SUFFIX_IDX (FAM_ID)	
➤ MEM_MENCERTIDX (MEM_CERTIFICATION_DATE)	
➤ MEM_REGCODE_IDX (REGION_CODE)	
➤ MEM_UPDOT_OX (UPDATE_DATE)	
➤ MEM_UPDOT_MMYYY_IDX (TO_CHAR(UPDATE_DATE,'mm-yyyy'))	
➤ MEM_UPDOT_TRC_IDX (TRUNC(UPDATE_DATE))	
➤ MEM_UPDOT_USER_IDX (UPDATE_USER)	
➤ MEM_WW_IDX1 (FAM_ID, UPDATE_DATE, UPDATE_USER)	
➤ MEM_WW_IDX2 (UPDATE_DATE, UPDATE_USER)	
➤ MEM_WW_IDX3 (FAM_ID, UPDATE_DATE, REGION)	
➤ MEM_WW_IDX4 (MEM_MPI, UPDATE_DATE, UPDATE_USER)	
➤ MEM_ELIG_HIST_CONTR_NUM_IDX (CONTRACT_NUMBER)	
➤ MEM_ELIG_HIST_IDX_FAM_ID (FAM_ID)	
➤ MEM_ELIG_HIST_MPI_IDX (MEM_MPI)	
➤ MEM_FAM_ID_UPDOT_DT_IDX (FAM_ID, UPDATE_DATE)	

GTC_ASES_ASES_FAM_ELIG_HIST	
P ID	NUMBER (20)
FAM_ID	VARCHAR2 (11 BYTE)
FAMILY_SSN	VARCHAR2 (9 BYTE)
UPDATE_DATE	DATE
UPDATE_USER	VARCHAR2 (8 BYTE)
CERTIFICATION_DATE	DATE
ELIGIBILITY_EFF_DATE	DATE
ELIGIBILITY_EXP_DATE	DATE
ELIGIBILITY_CAN_DATE	DATE
EFF_CARRIER_DATE	DATE
PRIMARY_CENTER	VARCHAR2 (4 BYTE)
REGION_ASES	VARCHAR2 (11 BYTE)
REGION_CODE	VARCHAR2 (11 BYTE)
CARRIER	VARCHAR2 (11 BYTE)
REGION	VARCHAR2 (11 BYTE)
MUNICIPALITY	VARCHAR2 (4 BYTE)
CONTRACT_NUMBER	VARCHAR2 (13 BYTE)
AUTO_ENROLL_INDICATOR	VARCHAR2 (1 BYTE)
AUTO_ENROLL_DATE	DATE
GROUP_ID	VARCHAR2 (10 BYTE)
MONTHLY_INCOME	NUMBER (10)
RESOURCES	NUMBER (10)
ELIGIBILITY_DED_LEVEL	VARCHAR2 (11 BYTE)
ELIGIBILITY_PERCENT_COPY	NUMBER (10)
HCRE_DENIAL_CODE	VARCHAR2 (2 BYTE)
MEMBERS	NUMBER (10)
MEMBERS_ELIGIBLE	NUMBER (10)
MEMBERS_MED_A	NUMBER (10)
MEMBERS_MED_AB	NUMBER (10)
PREV_MEMBERS_ELIGIBLE	NUMBER (10)
ELIGIBILITY_CAN_RSN	VARCHAR2 (2 BYTE)
OPTIONAL_DEPENDANTS	NUMBER (10)
MANCOMNANO	VARCHAR2 (11 BYTE)
ELA_ERRORS	VARCHAR2 (10 BYTE)
NEW_CARRIER	VARCHAR2 (2 BYTE)
NEW_PRIMARY_CENTER	VARCHAR2 (4 BYTE)
CHANGE_EFF_DATE	DATE
CHANGE_RSN	VARCHAR2 (2 BYTE)
NEW_CARRIER_EFF_DATE	DATE
PRIMARY_CENTER_EFF_DATE	DATE
PRIMARY_CENTER_PCP_CHG_RSN	VARCHAR2 (2 BYTE)
MEDT_MEM_ID	VARCHAR2 (250 BYTE)
CREATED_BY	VARCHAR2 (250 BYTE)
CREATED_ON	DATE
UPDATED_BY	VARCHAR2 (250 BYTE)
UPDATED_ON	DATE
TLOG_ID	NUMBER
MEDICAD_CANCELLATION_DATE	DATE
REGION_MOVE_IN_DATE	DATE
POVERTY_LEVEL_VALUE	NUMBER (4)
DATA_SOURCE	VARCHAR2 (2 BYTE)
DATE_MODIFIED	DATE
➤ ASES_FAM_ELIG_HIST_PK_1 (ID)	
➤ ASES_FAM_ELIG_HIST_IDX_1 (MEM_MPI)	
➤ ASES_FAM_ELIG_HIST_IDX_1_FAM_ID (FAM_ID, ELIGIBILITY_EFF_DATE, ELIGIBILITY_EXP_DATE, UPDATE_DATE, UPDATE_USER, REGION)	
➤ ASES_FAM_ELIG_HIST_IDX_FAM (FAM_ID, UPDATE_USER, UPDATE_DATE, REGION)	
➤ ASES_FAM_ELIG_HIST_PK_1 (ID)	
➤ FAM_ELG_H_TLOG_IDX_1 (TLOG_ID)	
➤ FAM_ELIG_HIST_IDX_FAM_ID_1 (FAM_ID)	
➤ FEH_REGCODE_IDX_1 (REGION_CODE)	
➤ FEH_UPDOT_IDX_1 (UPDATE_DATE)	
➤ FEH_UPDOTER_FAM_UPDOT_DT_IDX_1 (UPDATE_USER, FAM_ID, UPDATE_DATE)	
➤ FEH_WW_IDX1 (FAM_ID, UPDATE_DATE, UPDATE_USER, REGION)	
➤ FEH_WW_IDX2 (FAM_ID, UPDATE_DATE, REGION)	

GTC_ASES_ASES_MEM_HIST	
P ID	NUMBER (20)
MEM_SS	VARCHAR2 (9 BYTE)
FAM_ID	VARCHAR2 (11 BYTE)
FAM_MEM_SUFFIX	VARCHAR2 (2 BYTE)
COSI_ADD_DATE	DATE
COSI_ADD_USER	VARCHAR2 (8 BYTE)
MEM_SS_ORIGINAL	VARCHAR2 (9 BYTE)
LAST_NAME_1	VARCHAR2 (50 BYTE)
FIRST_NAME	VARCHAR2 (50 BYTE)
MIDDLE_INITIAL	VARCHAR2 (11 BYTE)
REGION_CODE	VARCHAR2 (11 BYTE)
UPDATE_DATE	DATE
UPDATE_USER	VARCHAR2 (8 BYTE)
CATEGORY_1	VARCHAR2 (11 BYTE)
CATEGORY_2	VARCHAR2 (11 BYTE)
CONDITION_IND	VARCHAR2 (11 BYTE)
PAN_ELIGIBLE_IND	VARCHAR2 (11 BYTE)
ECONOMIC_ASSET_IND	VARCHAR2 (11 BYTE)
RECEIVE_SOCIAL_SECURITYIND	VARCHAR2 (11 BYTE)
POLICY	VARCHAR2 (2 BYTE)
PAN_CLASSIFICATION_1	VARCHAR2 (11 BYTE)
PAN_CLASSIFICATION_2	VARCHAR2 (11 BYTE)
DENIAL_CATEGORY_1	VARCHAR2 (11 BYTE)
DENIAL_CATEGORY_2	VARCHAR2 (11 BYTE)
MONTHLY_GROSS_INCOME	NUMBER (10)
UNEMPLOYMENT_INCOME	NUMBER (10)
SOCIAL_SECURITY_INCOME	NUMBER (10)
FOOD_STAMPS_INCOME	NUMBER (10)
ABSENT_PARENT_IND	VARCHAR2 (11 BYTE)
EMPLOYMENT_STATUS_IND	VARCHAR2 (11 BYTE)
HICN	VARCHAR2 (12 BYTE)
DEDUCTIBLE_AMT	NUMBER (10)
DEDUCTIBLE_AMT_TO_DATE	NUMBER (10)
MEMBER_ID	NUMBER (10)
CREATED_BY	VARCHAR2 (250 BYTE)
CREATED_ON	DATE
UPDATED_BY	VARCHAR2 (250 BYTE)
UPDATED_ON	DATE
MEM_MPI	VARCHAR2 (13 BYTE)
TLOG_ID	NUMBER
➤ ASES_MEM_HIST_V2_PK_1 (ID)	
➤ ASES_MEM_HIST_IDX1 (FAM_ID, UPDATE_DATE, UPDATE_USER)	
➤ ASES_MEM_HIST_IDX2 (MEM_MPI, UPDATE_DATE, REGION_CODE)	
➤ ASES_MEM_HIST_V2_PK_1 (ID)	
➤ MEM1_HIST_IDX_FAM_ID (FAM_ID)	
➤ MEM1_HIST_TLOG_IDX (TLOG_ID)	
➤ MH1_FAM_SUFFIX_UPDOT_IDX (FAM_ID, FAM_MEM_SUFFIX, UPDATE_DATE)	
➤ MH1_FAM_SUFFIX_IDX (FAM_ID, FAM_MEM_SUFFIX)	
➤ MH1_MPI_IDX (MEM_MPI)	
➤ MH1_REGCODE_IDX (REGION_CODE)	
➤ MH1_UPDOT_IDX (UPDATE_DATE)	

GTC_ASES_ASES_FAM_HIST	
P ID	NUMBER (20)
FAM_ID	VARCHAR2 (11 BYTE)
UPDATE_DATE	DATE
UPDATE_USER	VARCHAR2 (8 BYTE)
COSI_EFF_DATE	DATE
COSI_EXP_DATE	DATE
REGION_CODE	VARCHAR2 (11 BYTE)
FACILITY	VARCHAR2 (4 BYTE)
LAST_NAME_1	VARCHAR2 (15 BYTE)
LAST_NAME_2	VARCHAR2 (15 BYTE)
POSTAL_ADDRESS_1	VARCHAR2 (25 BYTE)
POSTAL_ADDRESS_2	VARCHAR2 (25 BYTE)
POSTAL_CITY	VARCHAR2 (16 BYTE)
POSTAL_ZIP	VARCHAR2 (9 BYTE)
RESIDENTIAL_ADDRESS_1	VARCHAR2 (25 BYTE)
RESIDENTIAL_ADDRESS_2	VARCHAR2 (25 BYTE)
RESIDENTIAL_CITY	VARCHAR2 (15 BYTE)
RESIDENTIAL_ZIP	VARCHAR2 (9 BYTE)
PHONE	VARCHAR2 (10 BYTE)
PREMIUM_AMT	NUMBER (10)
DEDUCTIBLE_AMT	NUMBER (10)
OSDI_MEMBERS	NUMBER (10)
OSDI_MEMBERS_ELIGIBLE	NUMBER (10)
OSDI_ADD_USER	VARCHAR2 (8 BYTE)
EXCESS_MONTHLY_INCOME	NUMBER (10)
EXCESS_RESOURCES	NUMBER (10)
INVESTIGATION_IND	VARCHAR2 (11 BYTE)
PERCENT_COPY_IND	VARCHAR2 (11 BYTE)
CERTIFIER	VARCHAR2 (2 BYTE)
CONDITIONAL_IND	VARCHAR2 (11 BYTE)
PREMIUM_AMT_TO_DATE	NUMBER (10)
DEDUCTIBLE_AMT_TO_DATE	NUMBER (10)
OSDI_PILOT_AREA	VARCHAR2 (11 BYTE)
CREATED_BY	VARCHAR2 (250 BYTE)
CREATED_ON	DATE
UPDATED_BY	VARCHAR2 (250 BYTE)
UPDATED_ON	DATE
TLOG_ID	NUMBER
FIRST_NAME	VARCHAR2 (25 BYTE)
➤ ASES_FAM_HIST_V2_PK_1 (ID)	
➤ ASES_FAM_HIST_V2_PK_1 (ID)	
➤ FAM_HIST_IDX_FAM_ID_1 (FAM_ID)	
➤ FAM_HIST_TLOG_IDX_1 (TLOG_ID)	
➤ FH_REGCODE_IDX_1 (REGION_CODE)	
➤ FH_UPDOT_IDX_1 (UPDATE_DATE)	
➤ FH_UPDOTER_IDX_1 (UPDATE_USER)	
➤ FH_WW_IDX1 (FAM_ID, UPDATE_DATE, UPDATE_USER)	
➤ FH_WW_IDX2 (FAM_ID, UPDATE_DATE, REGION_CODE)	

GTC_ASES_ASES_INSURANCE	
P ID	NUMBER (20)
FAM_ID	VARCHAR2 (11 BYTE)
FAM_MEM_SUFFIX	VARCHAR2 (2 BYTE)
REGION_CODE	VARCHAR2 (11 BYTE)
UPDATE_DATE	DATE
UPDATE_USER	VARCHAR2 (16 BYTE)
INSURER_ID	VARCHAR2 (2 BYTE)
MEDICAL_CODE	VARCHAR2 (11 BYTE)
POLICY	VARCHAR2 (20 BYTE)
INSURER_CODE	VARCHAR2 (3 BYTE)
POLICY_EXP_DATE	DATE
COVERED_SERVICES	VARCHAR2 (40 BYTE)
LAST_CHANGE_DATE	DATE
MEMBER_ID	NUMBER (10)
CREATED_BY	VARCHAR2 (250 BYTE)
CREATED_ON	DATE
UPDATED_BY	VARCHAR2 (250 BYTE)
UPDATED_ON	DATE
TLOG_ID	NUMBER
MEM_MPI	VARCHAR2 (13 BYTE)
CMS_CARRIER	VARCHAR2 (3 BYTE)
CMS_PACKAGE	VARCHAR2 (3 BYTE)
CMS_CARRIER_EFF_DATE	DATE
➤ ASES_INSURANCE_PK_1 (ID)	
➤ ASES_IDX_UJ_UJ_1 (UPDATE_DATE)	
➤ ASES_INSURANCE_PK_1 (ID)	
➤ INS_FAM_SUFFIX_IDX_1 (FAM_ID, FAM_MEM_SUFFIX)	
➤ INS_REGCODE_IDX_1 (REGION_CODE)	

GTC_ASES_REGDEM_DECEASED_HIST	
P ID	NUMBER (20)
MEM_MPI	VARCHAR2 (13 BYTE)
DEATH_YEAR	NUMBER
DECEASED_NUMBER	NUMBER
DECEASED_NUMBER_DUP	NUMBER
DECEASED_CERTIFICATE	NUMBER
DECEASED_CERTIFICATE_DUP	NUMBER
SSN	VARCHAR2 (9 BYTE)
LAST_NAME1	VARCHAR2 (50 BYTE)
LAST_NAME2	VARCHAR2 (50 BYTE)
FIRST_NAME	VARCHAR2 (150 BYTE)
SECOND_NAME	VARCHAR2 (50 BYTE)
GENDER	VARCHAR2 (11 BYTE)
DEATH_DATE	DATE
REGISTRY_DATE	DATE
DEATH_LOCATION	VARCHAR2 (50 BYTE)
DEATH_COUNTRY	VARCHAR2 (50 BYTE)
MARITAL_STATUS	VARCHAR2 (50 BYTE)
SPOUSE_LAST_NAME1	VARCHAR2 (50 BYTE)
SPOUSE_LAST_NAME2	VARCHAR2 (50 BYTE)
SPOUSE_NAME	VARCHAR2 (150 BYTE)
SPOUSE_MIDDLE_NAME	VARCHAR2 (50 BYTE)
BIRTH_DATE	DATE
BIRTH_LOCATION	VARCHAR2 (50 BYTE)
BIRTH_COUNTRY	VARCHAR2 (50 BYTE)
FATHER_LAST_NAME1	VARCHAR2 (50 BYTE)
FATHER_LAST_NAME2	VARCHAR2 (50 BYTE)
FATHER_NAME	VARCHAR2 (50 BYTE)
FATHER_MID_NAME	VARCHAR2 (50 BYTE)
FATHER_BIRTH_LOCATION	VARCHAR2 (50 BYTE)
FATHER_BIRTH_COUNTRY	VARCHAR2 (50 BYTE)
MOTHER_LAST_NAME1	VARCHAR2 (50 BYTE)
MOTHER_LAST_NAME2	VARCHAR2 (50 BYTE)
MOTHER_NAME	VARCHAR2 (50 BYTE)
MOTHER_MID_NAME	VARCHAR2 (50 BYTE)
MOTHER_BIRTH_LOCATION	VARCHAR2 (50 BYTE)
MOTHER_BIRTH_COUNTRY	VARCHAR2 (50 BYTE)
DECEASED_AGE	NUMBER
AGE_UNIT	VARCHAR2 (50 BYTE)
EXTRACT_DATE	DATE
DECEASED_CONTROL_NUMBER	NUMBER
ESPACIOS	VARCHAR2 (150 BYTE)
FLOG_ID	NUMBER
CREATED_BY	VARCHAR2 (50 BYTE)
CREATED_ON	DATE
UPDATED_BY	VARCHAR2 (50 BYTE)
UPDATED_ON	DATE
MPI_SSN	VARCHAR2 (13 BYTE)
ADJ_TYPE	NUMBER
➤ REGDEM_DECEASED_HIST_PK (ID)	
➤ REGDEM_DECEASED_HIST_PK (ID)	
➤ REGDEM_DEC_FLOG_IDX (FLOG_ID)	



## 9.8 Weekly Payment Register

GTC_ASES.ASES_MIP_CARRIER_TRANS_HIST	
MIP_DOC_NUM	VARCHAR2 (50)
MIP_NORDERID	NUMBER (10)
MIP_NLINELINKID	NUMBER (10)
MIP_TRANS_ID	VARCHAR2 (50)
CARRIER_ID	VARCHAR2 (2)
REGION_CODE	VARCHAR2 (2)
PREMIUM_DATE	DATE (7)
MIP_ADJ_TYPE	VARCHAR2 (25)
PREMIUM	NUMBER
MIP_TRANS_DATE	DATE (7)
MIP_TRANS_AMOUNT	NUMBER
MIP_DOC_ID	VARCHAR2 (25)
MIP_ACC_CODE	VARCHAR2 (5)
MIP_ACC_CODE_DESC	VARCHAR2 (75)
MIP_PLAN_TYPE	VARCHAR2 (10)
MIP_DESC	VARCHAR2 (200)
MIP_REGION_CODE	VARCHAR2 (4)
MIP_CARRIER_ID	VARCHAR2 (30)
MIP_YEAR	VARCHAR2 (4)
MIP_MONTH	VARCHAR2 (2)
MIP_STATUS	VARCHAR2 (30)
GEN_DATE	DATE (7)
CREATED_BY	VARCHAR2 (250)
CREATED_ON	DATE (7)
UPDATE_BY	VARCHAR2 (250)
UPDATED_ON	DATE (7)
FK_IO_DATA	NUMBER
FK_IO_DATA_VERS	NUMBER

GTC_ASES.ASES_MIP_TRANS_HIST	
MIP_DOC_ID	VARCHAR2 (50 BYTE)
MIP_NORDERID	NUMBER (10)
MIP_NLINELINKID	NUMBER (10)
MIP_TRANS_ID	VARCHAR2 (50 BYTE)
CARRIER_ID	VARCHAR2 (2 BYTE)
REGION_CODE	VARCHAR2 (2 BYTE)
PREMIUM_DATE	DATE
MIP_ADJ_TYPE	VARCHAR2 (25 BYTE)
PREMIUM	NUMBER
MIP_TRANS_DATE	DATE
MIP_TRANS_AMOUNT	NUMBER
MIP_DOC_NUM	VARCHAR2 (25 BYTE)
MIP_ACC_CODE	VARCHAR2 (5 BYTE)
MIP_ACC_CODE_DESC	VARCHAR2 (75 BYTE)
MIP_PLAN_TYPE	VARCHAR2 (10 BYTE)
MIP_DESC	VARCHAR2 (200 BYTE)
MIP_REGION_CODE	VARCHAR2 (4 BYTE)
MIP_CARRIER_ID	VARCHAR2 (30 BYTE)
MIP_YEAR	VARCHAR2 (4 BYTE)
MIP_MONTH	VARCHAR2 (2 BYTE)
MIP_STATUS	VARCHAR2 (30 BYTE)
GEN_DATE	DATE
CREATED_BY	VARCHAR2 (250 BYTE)
CREATED_ON	DATE
UPDATE_BY	VARCHAR2 (250 BYTE)
UPDATED_ON	DATE
FK_IO_DATA	NUMBER
FK_IO_DATA_VERS	NUMBER
MIP_CT_HIST_MIP_TD_IDX (MIP_TRANS_DATE)	